

# LINEA LIGHT

5925XSO075L51-10 RAL7001

EAN 4031582399127  
Order number 00770565



BETTER MOBILITY. BETTER LIFE.



Image may differ from the original product

## PERFORMANCE

Roll performance	● ● ● ● ●
Movement noise	● ● ● ● ●
Attrition	● ● ● ● ●
Corrosion resistance	● ● ● ● ●

## CORE ATTRIBUTES

Product name	Linea light
Type	Swivel castor with wheel brake
Standard	EN12528 - Furniture Castors
Load capacity at 3 km/h	90 kg
Electric conductive	✓
Load capacity Static	180 kg
Temperature range (Minimum)	-20 °C
Temperature range (Maximum)	60 °C
Overall height	75.5 mm
Overall width	55 mm
Overall weight	0.15 kg

## WHEEL

Body material	Polyamide, electric conductive
Tread material	Polyurethane, injected, electric-conductive
Bearing	Plain bearing
Threadguards	Without threadguard
Diameter	75 mm
Tread width	15 mm
Hardness of tread (A)	92 Shore A

## HOUSING

Material fork	Polyamide
Fork shape	Twin wheel housing
Swivel bearing	Stem, swiveling
Colour	Silver grey (RAL7001)
Offset	23 mm
Swivel radius	81 mm
Swivel interference	162 mm
Dome diameter	30 mm

## FITTING

Fitting type	Blind hole for B10
Bolt hole diameter	10 mm



# LINEA LIGHT

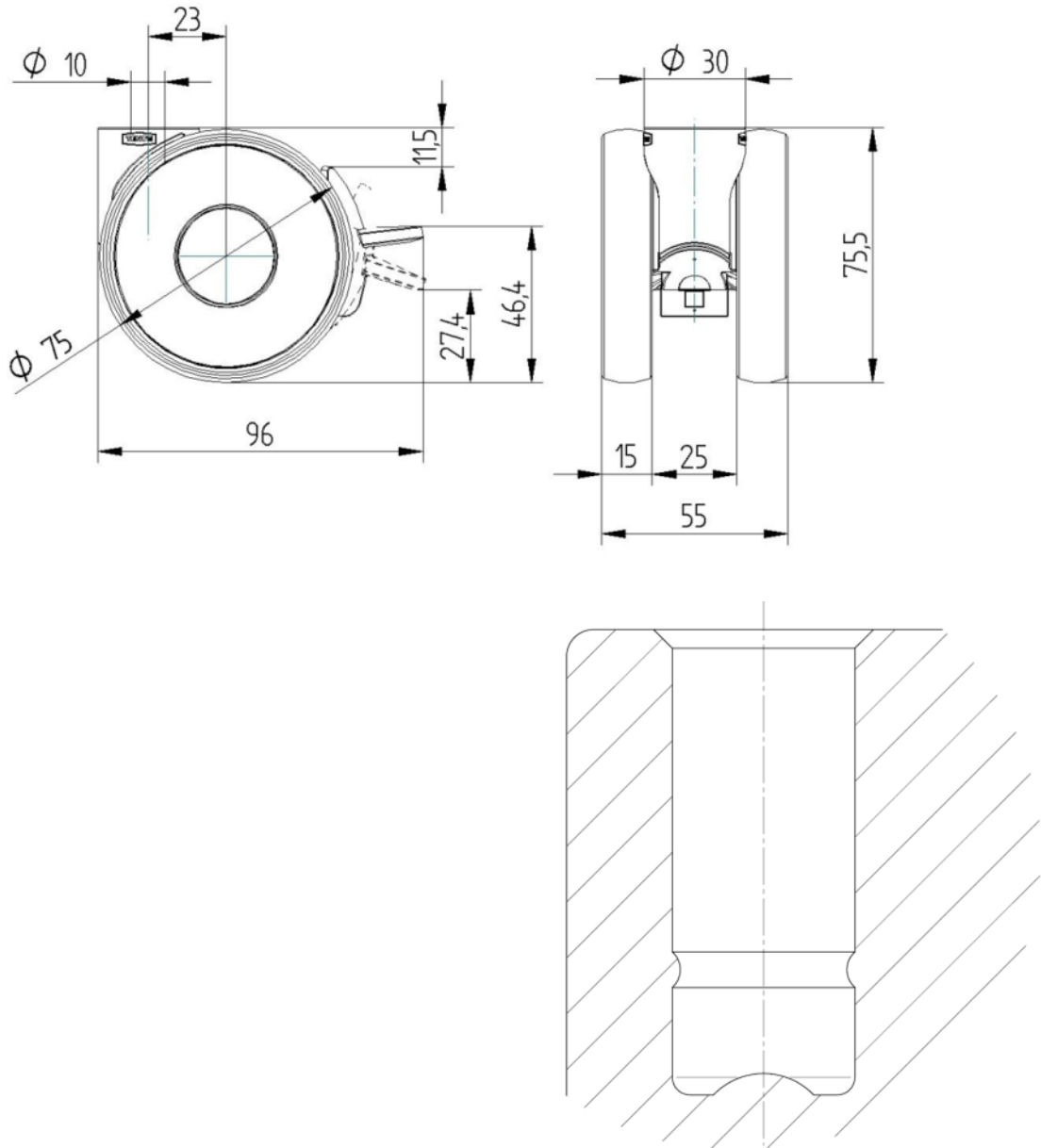
5925XSO075L51-10 RAL7001

EAN 4031582399127  
Order number 00770565



BETTER MOBILITY. BETTER LIFE.

## TECHNICAL DRAWINGS



Deutscher  
Designer  
Club



Interzum  
Award



IF  
Design  
Award