

LINEA LIGHT

5920UAO065L51-10 RAL 7001

EAN 4031582431926



BETTER MOBILITY. BETTER LIFE.



Image may differ from the original product

PERFORMANCE

Roll performance	● ● ● ○ ○
Movement noise	● ● ● ○ ○
Attrition	● ● ● ○ ○
Corrosion resistance	● ● ● ● ○

CORE ATTRIBUTES

Product name	Linea light
Type	Swivel castor
Standard	EN12528 - Furniture Castors
Load capacity at 3 km/h	70 kg
Load capacity Static	140 kg
Temperature range (Minimum)	-10 °C
Temperature range (Maximum)	40 °C
Overall height	68 mm
Overall width	46 mm
Overall weight	0.103 kg

WHEEL

Body material	Polyamide
Tread material	Polyurethane, injected
Bearing	Plain bearing
Threadguards	Without threadguard
Diameter	65 mm
Tread width	13.9 mm
Hardness of tread (A)	87 Shore A

HOUSING

Material fork	Polyamide
Fork shape	Twin wheel housing
Swivel bearing	Stem, swiveling
Colour	Silver grey (RAL7001)
Offset	23 mm
Swivel radius	56 mm
Swivel interference	112 mm
Dome diameter	23 mm

FITTING

Fitting type	Blind hole for B10
Bolt hole diameter	10 mm



Deutscher Designer Club



Interzum Award



IF Design Award

LINEA LIGHT

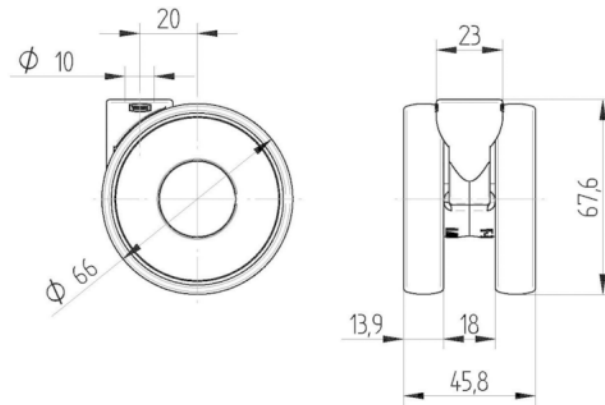
5920UAO065L51-10 RAL 7001

EAN 4031582431926



BETTER MOBILITY. BETTER LIFE.

TECHNICAL DRAWINGS



Deutscher
Designer
Club



Interzum
Award



IF
Design
Award