

# LINEA

5940XSC100P30-13 RAL9002

EAN 4031582352467



BETTER MOBILITY. BETTER LIFE.



Image may differ from the original product

## PERFORMANCE

Roll performance	● ● ● ● ●
Movement noise	● ● ● ○ ○
Attrition	● ● ● ● ○
Corrosion resistance	● ● ● ● ○

## CORE ATTRIBUTES

Product name	Linea
Type	Swivel castor
Standard	EN12530 - Devices Castors
Load capacity at 1.8 mph	264.55 lb
Electric conductive	✓
Stainless	✓
Load capacity Static	529.11 lb
Temperature range (Minimum)	14 °F
Temperature range (Maximum)	104 °F
Overall height	4.65 in
Overall width	3.23 in
Overall weight	1.36 lb

## WHEEL

Body material	Polyamide, electric conductive
Tread material	Polyurethane, injected, electric-conductive
Bearing	Precision ball bearing, stainless
Tread color	Slate gray (RAL7015)
Wheel color	Slate gray (RAL7015)
Threadguards	With threadguard
Diameter	3.94 in
Tread width	0.79 in
Body width	0.79 in
Hardness of tread (A)	92 Shore A

## HOUSING

Material	Polyamide
Fork shape	Twin wheel housing
Swivel bearing	Precision ball bearing
Color	Gray white (RAL9002)
Offset	1.26 in
Swivel radius	3.54 in
Swivel interference	7.09 in
Dome diameter	2.05 in

## FITTING

Fitting type	Bolt hole
Bolt hole diameter	0.51 in



# LINEA

5940XSC100P30-13 RAL9002

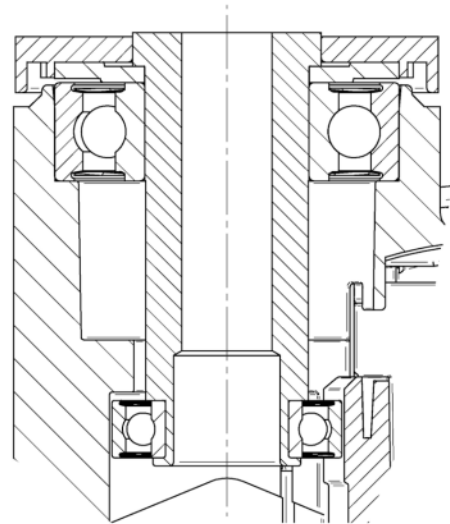
EAN 4031582352467



BETTER MOBILITY. BETTER LIFE.

## TECHNICAL DRAWINGS

---



Deutscher  
Designer  
Club



Interzum  
Award



IF  
Design  
Award