

# LINEA CLINIC LOAD

5980UAP150R05-32

EAN 4031582382501



BETTER MOBILITY. BETTER LIFE.



Image may differ from the original product

## PERFORMANCE

Roll Performance	● ● ● ● ●
Movement Noise	● ● ● ○ ○
Attrition	● ● ● ● ○
Corrosion Resistance	● ● ● ● ○

## CORE ATTRIBUTES

Product Name	Linea clinic load
Type	Swivel castor
Standard	EN12530 - Devices Castors
Load capacity at 3 km/h	200 kg
Electric Conductive	No
Stainless	No
Load capacity Static	400 kg
Temperature range (Minimum)	-10 °C
Temperature range (Maximum)	40 °C
Overall Height	155 mm
Overall width	71 mm
Overall weight	1.69 kg

## HOUSING

Housing Material	Polyamide
Fork shape	Twin wheel housing
Swivel Bearing	Two ball races, reinforced or stainless
Offset	47.5 mm
Swivel radius	122.5 mm
Swivel interference	254 mm

## WHEEL

Body material	Polyamide
Tread Material Mix	Polyurethane, injected
Bearing	Precision ball bearing
Threadguards	With threadguard
Diameter	150 mm
Tread width	15 mm

## FITTING

Fitting type	Solid stem, round
Bolt diameter	32 mm
Bolt length	45 mm



Deutscher Designer Club



Interzum Award



product design award

IF Design Award

# LINEA CLINIC LOAD

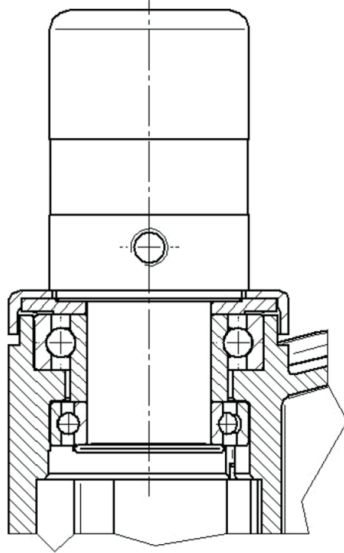
5980UAP150R05-32

EAN 4031582382501

Order number 00039570  
Product Drawings



BETTER MOBILITY. BETTER LIFE.



Deutscher  
Designer  
Club



Interzum  
Award



product  
design  
award

IF Design  
Award