

NOVATECH

ETP 080X34-Ø12 HL32

EAN 4031582329353
Order number 00806830



BETTER MOBILITY. BETTER LIFE.

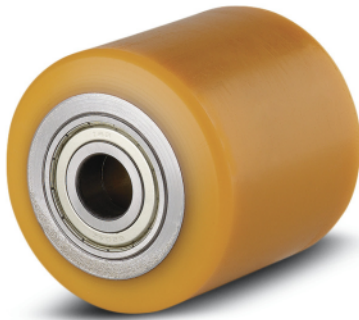


Image may differ from the original product

WHEEL

Body material	Steel, iron
Tread material	Polyurethane, casted
Bearing	Precision ball bearing
Wheel color	Honey yellow (RAL1005)
Threadguards	With threadguard
Diameter	80 mm
Tread width	34 mm
Axle hole diameter	12 mm
Hub length	32 mm
Body width	34 mm
Hardness of tread (A)	92 Shore A
Hardness of tread (D)	42 Shore D
Bearing type	6201

PERFORMANCE

Roll performance	● ● ● ● ○
Movement noise	● ● ● ○ ○
Attrition	● ● ● ● ○
Corrosion resistance	● ● ● ○ ○

CORE ATTRIBUTES

Product name	Novatech
Type	Wheel
Standard	EN12532 - Transport Equipment
Load capacity at 4 km/h	200 kg
Load capacity at 6 km/h	160 kg
Load capacity Static	400 kg
Temperature range (Minimum)	-10 °C
Temperature range (Maximum)	60 °C
Overall weight	0.547 kg

TECHNICAL DRAWINGS

