

OMIKRON TWIN

9958FTP250P68

EAN 4031582316995
Order number 00801115



BETTER MOBILITY. BETTER LIFE.

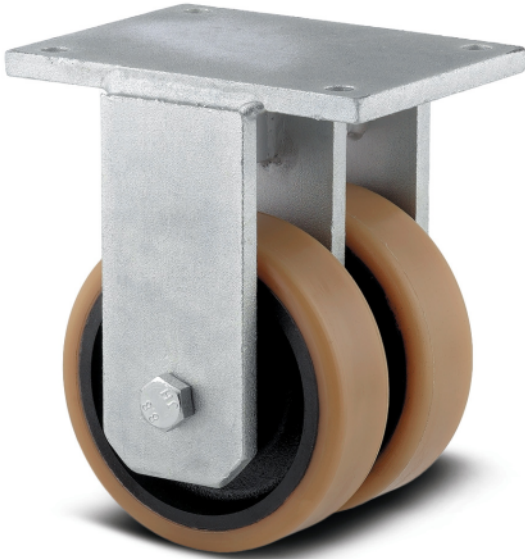


Image may differ from the original product

PERFORMANCE

Roll performance	● ● ● ○ ○
Movement noise	● ● ● ○ ○
Attrition	● ● ● ● ○
Corrosion resistance	● ● ● ● ○

CORE ATTRIBUTES

Product name	Omikron twin
Type	Fixed castor
Standard	similar EN12532 - Transport Equipment
Load capacity at 4 km/h	5000 kg
Load capacity at 6 km/h	3600 kg
Load capacity Static	7500 kg
Temperature range (Minimum)	-10 °C
Temperature range (Maximum)	60 °C
Overall height	365 mm
Overall width	272 mm
Overall weight	38.319 kg

WHEEL

Body material	Cast iron
Tread material	Polyurethane, casted
Bearing	Precision ball bearing
Axle	Screwed with nut
Wheel color	Honey yellow (RAL1005)
Threadguards	With threadguard
Diameter	250 mm
Tread width	80 mm
Body width	80 mm
Hardness of tread (A)	92 Shore A
Hardness of tread (D)	42 Shore D

HOUSING

Material fork	Iron forged, heavy
Fork shape	Twin wheel housing
Colour	Transparent coating
Lubrication nipple	✓
Dome diameter	235 mm

FITTING

Fitting type	Extra large rectangular heavy-duty plate
Plate length	270 mm
Plate width	250 mm
Plate hole length (Maximum)	210 mm
Plate hole width (Maximum)	230 mm
Plate hole diameter	17 mm

OMIKRON TWIN

9958FTP250P68

EAN 4031582316995
Order number 00801115



BETTER MOBILITY. BETTER LIFE.

TECHNICAL DRAWINGS

