

SUPRATECH

PJP100X35-Ø8,3 HL45

EAN 4031582444223



BETTER MOBILITY. BETTER LIFE.

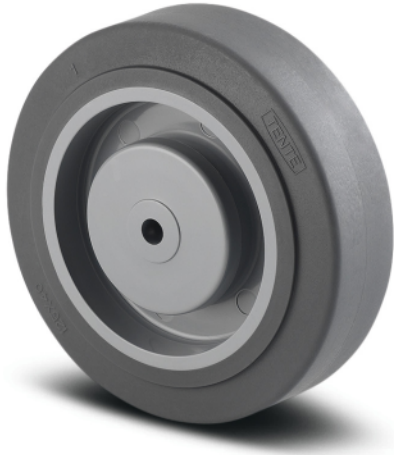


Image may differ from the original product

WHEEL

Body material	Polypropylene
Tread material	Thermoplastic rubber
Bearing	Precision ball bearing
Threadguards	With threadguard
Diameter	3.94 in
Tread width	1.26 in
Axle hole diameter	0.31 in
Hub length	1.77 in
Hardness of tread (A)	87 Shore A

PERFORMANCE

Roll performance	● ● ● ○ ○
Movement noise	● ● ● ○ ○
Attrition	● ● ● ○ ○
Corrosion resistance	● ● ● ○ ○

CORE ATTRIBUTES

Product name	Supratech
Type	Wheel
Standard	EN12530 - Devices Castors
Load capacity at 1.8 mph	220.46 lb
Load capacity Static	440.92 lb
Temperature range (Minimum)	-4 °F
Temperature range (Maximum)	140 °F
Overall weight	0.47 lb

SUPRATECH

PJP100X35-Ø8,3 HL45

EAN 4031582444223



BETTER MOBILITY. BETTER LIFE.

TECHNICAL DRAWINGS

