

GALEA

5070YGP100P30-12

EAN 4031582353891
Order number 00074602



BETTER MOBILITY. BETTER LIFE.

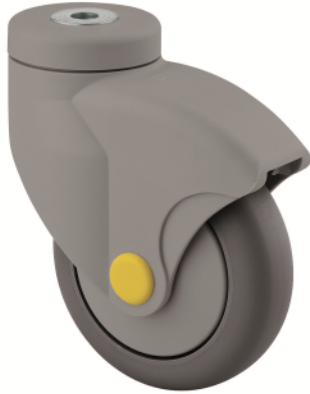


Image may differ from the original product

PERFORMANCE

Roll performance	● ● ● ○ ○
Movement noise	● ● ● ○ ○
Attrition	● ● ● ○ ○
Corrosion resistance	● ● ● ● ○

CORE ATTRIBUTES

Product name	Galea
Type	Swivel castor
Standard	EN12530 - Devices Castors
Load capacity at 1.8 mph	220.46 lb
Electric conductive	✓
Load capacity Static	440.92 lb
Temperature range (Minimum)	-4 °F
Temperature range (Maximum)	140 °F
Overall height	5.47 in

WHEEL

Body material	Polypropylene, electric conductive
Tread material	Thermoplastic rubber, electric-conductive
Bearing	Precision ball bearing
Threadguards	With threadguard
Diameter	3.94 in
Tread width	1.18 in
Hardness of tread (A)	87 Shore A

HOUSING

Material	Polyamide
Fork shape	Closed
Swivel bearing	Two ball races
Offset	1.57 in
Swivel radius	3.54 in
Swivel interference	7.09 in

FITTING

Fitting type	Bolt hole
Bolt hole diameter	0.47 in

GALEA

5070YGP100P30-12

EAN 4031582353891
Order number 00074602



BETTER MOBILITY. BETTER LIFE.

TECHNICAL DRAWINGS

