

ELASTECH

IFP300X55-Ø25

EAN 4031582366310



BETTER MOBILITY. BETTER LIFE.

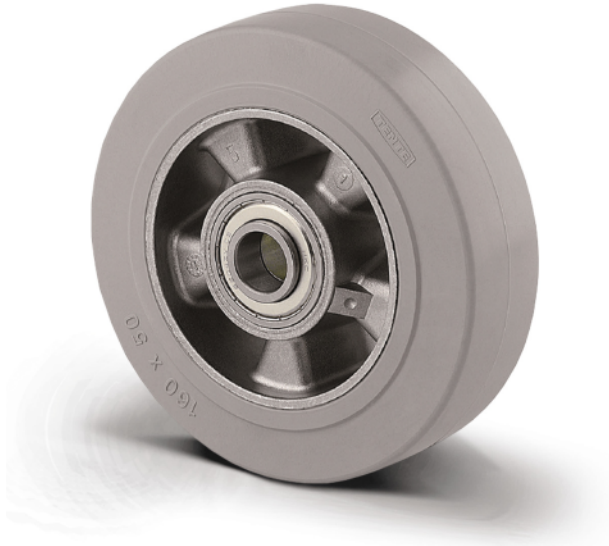


Image may differ from the original product

WHEEL

Body material	Aluminum
	soft
Tread material	Elastic tire, non-marking, vulcanized
Bearing	Precision ball bearing
Threadguards	Without threadguard
Diameter	11.81 in
Tread width	2.17 in
Axle hole diameter	0.98 in
Hub length	2.36 in
Hardness of tread (A)	68 Shore A

PERFORMANCE

Roll performance	● ● ● ○ ○
Movement noise	● ● ● ○ ○
Attrition	● ● ● ○ ○
Corrosion resistance	● ● ● ○ ○

CORE ATTRIBUTES

Product name	Elastech
Type	Wheel
Standard	EN12532 - Transport Equipment
Load capacity at 2.5 mph	1322.77 lb
Load capacity at 3.7 mph	1058.22 lb
Load capacity Static	2645.54 lb
Temperature range (Minimum)	-4 °F
Temperature range (Maximum)	185 °F

ELASTECH

IFP300X55-Ø25

EAN 4031582366310



BETTER MOBILITY. BETTER LIFE.

TECHNICAL DRAWINGS

