

ALPHA STAINLESS

8477UFD125P62

EAN 4031582346985
Order number 00035516



BETTER MOBILITY. BETTER LIFE.

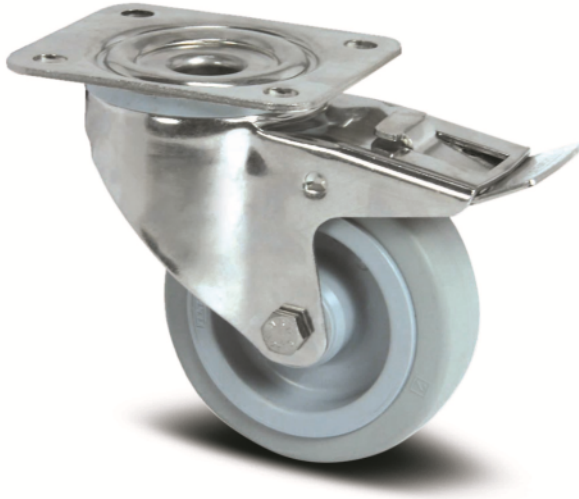


Image may differ from the original product

PERFORMANCE

Roll performance	● ● ● ● ○
Movement noise	● ● ● ● ○
Attrition	● ● ● ○ ○
Corrosion resistance	● ● ● ● ●

CORE ATTRIBUTES

Product name	Alpha stainless
Type	Swivel castor with total lock
Standard	EN12532 - Transport Equipment
Load capacity at 2.5 mph	551.16 lb
Stainless	✓
Load capacity Static	1102.31 lb
Temperature range (Minimum)	-4 °F
Temperature range (Maximum)	176 °F
Overall height	6.1 in
Overall width	2.95 in
Overall weight	2.58 lb

WHEEL

Body material	Polyamide
	soft
Tread material	Elastic tire, non-marking, vulcanized
Bearing	Roller bearing, stainless
Axle	Screwed with nut
Wheel color	Silver gray (RAL7001)
Diameter	4.92 in
Tread width	1.57 in
Body width	1.57 in
Hardness of tread (A)	63 Shore A

HOUSING

Material	Stainless steel, heavy
Fork shape	Broad
Swivel bearing	Two ball races
Color	Stainless steel
Offset	1.57 in
Swivel radius	4.84 in
Swivel interference	9.69 in
Dome diameter	2.95 in

FITTING

Fitting type	Rectangular plate
Plate length	4.13 in
Plate width	3.35 in
Plate hole length (Minimum)	3.03 in
Plate hole length (Maximum)	2.36 in
Plate hole width (Minimum)	3.03 in
Plate hole width (Maximum)	3.15 in
Plate hole diameter	0.35 in

ALPHA STAINLESS

8477UFD125P62

EAN 4031582346985
Order number 00035516



BETTER MOBILITY. BETTER LIFE.

TECHNICAL DRAWINGS

3477U00125P62-neu

