

# ELASTECH

IFP 200X50-Ø25

EAN 4031582319842  
Order number 00830632



BETTER MOBILITY. BETTER LIFE.

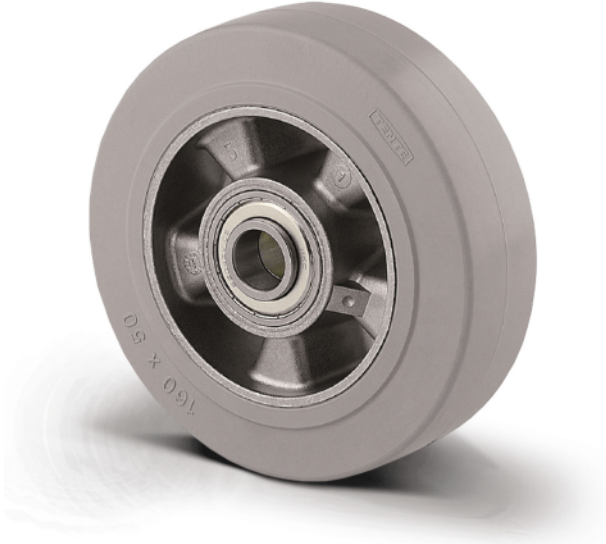


Image may differ from the original product

## WHEEL

Body material	Aluminum
	soft
Tread material	Elastic tire, non-marking, vulcanized
Bearing	Precision ball bearing
Wheel color	Gray / non- marking
Threadguards	Without threadguard
Diameter	7.87 in
Tread width	1.97 in
Axle hole diameter	0.98 in
Hub length	2.36 in
Body width	1.97 in
Hardness of tread (A)	68 Shore A

## PERFORMANCE

Roll performance	● ● ○ ○ ○
Movement noise	● ● ● ● ●
Attrition	● ● ● ○ ○
Corrosion resistance	● ● ● ○ ○

## CORE ATTRIBUTES

Product name	Elastech
Type	Wheel
Standard	EN12532 - Transport Equipment
Load capacity at 2.5 mph	992.08 lb
Load capacity at 3.7 mph	793.66 lb
Load capacity Static	1984.16 lb
Temperature range (Minimum)	-4 °F
Temperature range (Maximum)	185 °F
Overall weight	3.77 lb

# ELASTECH

IFP 200X50-Ø25

EAN 4031582319842  
Order number 00830632



BETTER MOBILITY. BETTER LIFE.

## TECHNICAL DRAWINGS

