

# ALPHA STAINLESS

8477UFD125P62

EAN 4031582346985  
Order number 00035516



BETTER MOBILITY. BETTER LIFE.

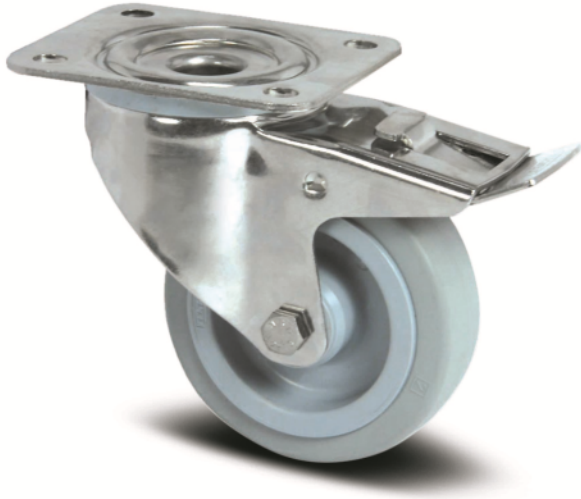


Image may differ from the original product

## PERFORMANCE

|                      |           |
|----------------------|-----------|
| Roll performance     | ● ● ● ● ○ |
| Movement noise       | ● ● ● ● ○ |
| Attrition            | ● ● ● ○ ○ |
| Corrosion resistance | ● ● ● ● ● |

## CORE ATTRIBUTES

|                             |                               |
|-----------------------------|-------------------------------|
| Product name                | Alpha stainless               |
| Type                        | Swivel castor with total lock |
| Standard                    | EN12532 - Transport Equipment |
| Load capacity at 4 km/h     | 250 kg                        |
| Stainless                   | ✓                             |
| Load capacity Static        | 500 kg                        |
| Temperature range (Minimum) | -20 °C                        |
| Temperature range (Maximum) | 80 °C                         |
| Overall height              | 155 mm                        |
| Overall width               | 75 mm                         |
| Overall weight              | 1.169 kg                      |

## WHEEL

|                       |                                       |
|-----------------------|---------------------------------------|
| Body material         | Polyamide                             |
| Tread hardness        | soft                                  |
| Tread material        | Elastic tire, non-marking, vulcanized |
| Bearing               | Roller bearing, stainless             |
| Axle                  | Screwed with nut                      |
| Wheel color           | Silver grey (RAL7001)                 |
| Diameter              | 125 mm                                |
| Tread width           | 40 mm                                 |
| Body width            | 40 mm                                 |
| Hardness of tread (A) | 63 Shore A                            |

## HOUSING

|                     |                        |
|---------------------|------------------------|
| Material fork       | Stainless steel, heavy |
| Fork shape          | Broad                  |
| Swivel bearing      | Two ball races         |
| Colour              | Stainless steel        |
| Offset              | 40 mm                  |
| Swivel radius       | 123 mm                 |
| Swivel interference | 246 mm                 |
| Dome diameter       | 75 mm                  |

## FITTING

|                             |                         |
|-----------------------------|-------------------------|
| Fitting type                | Small rectangular plate |
| Plate length                | 105 mm                  |
| Plate width                 | 85 mm                   |
| Plate hole length (Minimum) | 77 mm                   |
| Plate hole length (Maximum) | 60 mm                   |
| Plate hole width (Minimum)  | 77 mm                   |
| Plate hole width (Maximum)  | 80 mm                   |
| Plate hole diameter         | 9 mm                    |

# ALPHA STAINLESS

8477UFD125P62

EAN 4031582346985  
Order number 00035516



BETTER MOBILITY. BETTER LIFE.

## TECHNICAL DRAWINGS

3477U00125P62-neu

