

LINEA LOW HEIGHT

5945UAP075P30-8 LH RAL7001 KICK 3000

EAN 4031582454031



BETTER MOBILITY. BETTER LIFE.

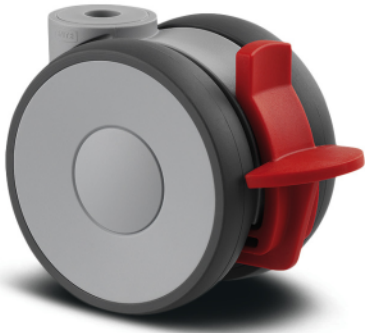


Image may differ from the original product

PERFORMANCE

Roll performance	● ● ● ● ●
Movement noise	● ● ● ○ ○
Attrition	● ● ● ● ○
Corrosion resistance	● ● ● ● ○

CORE ATTRIBUTES

Product name	Linea low height
Type	Swivel castor with wheel brake
Standard	EN12530 - Devices Castors
Load capacity at 1.8 mph	198.42 lb
Load capacity Static	396.83 lb
Temperature range (Minimum)	14 °F
Temperature range (Maximum)	104 °F
Overall height	3.07 in
Overall width	2.28 in
Overall weight	0.54 lb

WHEEL

Body material	Polyamide
Tread material	Polyurethane, injected
Bearing	Precision ball bearing
Threadguards	With threadguard
Diameter	2.95 in
Tread width	0.59 in
Hardness of tread (A)	92 Shore A

HOUSING

Material	Polyamide
Fork shape	Twin wheel housing
Swivel bearing	Precision ball bearing
Color	Silver gray (RAL7001)
Offset	0.91 in
Swivel radius	3.07 in
Swivel interference	6.14 in
Dome diameter	1.18 in

FITTING

Fitting type	Bolt hole
Bolt hole diameter	0.31 in



LINEA LOW HEIGHT

5945UAP075P30-8 LH RAL7001 KICK 3000

EAN 4031582454031



BETTER MOBILITY. BETTER LIFE.

TECHNICAL DRAWINGS

