

LINEA LOW HEIGHT

5945UAP075P30-8 LH RAL7001 KICK 3000

EAN 4031582454031



BETTER MOBILITY. BETTER LIFE.

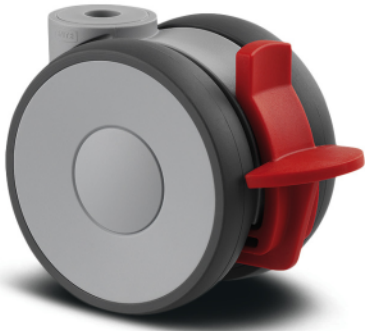


Image may differ from the original product

PERFORMANCE

Roll performance	● ● ● ● ●
Movement noise	● ● ● ○ ○
Attrition	● ● ● ● ○
Corrosion resistance	● ● ● ● ○

CORE ATTRIBUTES

Product name	Linea low height
Type	Swivel castor with wheel brake
Standard	EN12530 - Devices Castors
Load capacity at 3 km/h	90 kg
Load capacity Static	180 kg
Temperature range (Minimum)	-10 °C
Temperature range (Maximum)	40 °C
Overall height	78 mm
Overall width	58 mm
Overall weight	0.245 kg

WHEEL

Body material	Polyamide
Tread material	Polyurethane, injected
Bearing	Precision ball bearing
Threadguards	With threadguard
Diameter	75 mm
Tread width	15 mm
Hardness of tread (A)	92 Shore A

HOUSING

Material fork	Polyamide
Fork shape	Twin wheel housing
Swivel bearing	Precision ball bearing
Colour	Silver grey (RAL7001)
Offset	23 mm
Swivel radius	78 mm
Swivel interference	156 mm
Dome diameter	30 mm

FITTING

Fitting type	Bolt hole
Bolt hole diameter	8 mm



Deutscher Designer Club



Interzum Award



IF Design Award

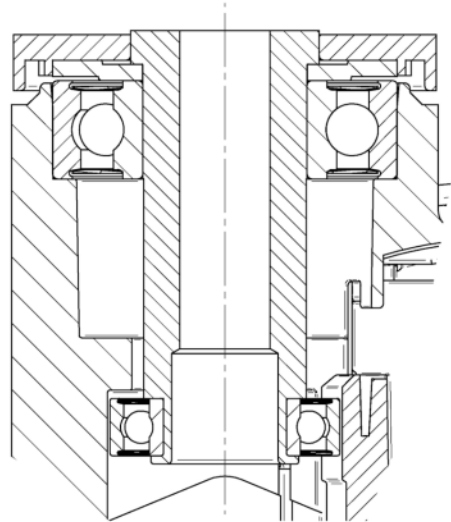
PRODUCT INFORMATION

LINEA LOW HEIGHT

5945UAP075P30-8 LH RAL7001 KICK 3000

EAN 4031582454031

TECHNICAL DRAWINGS



Deutscher
Designer
Club



Interzum
Award



IF
Design
Award