

# LINEA LIGHT

5925XSO075L51-10 RAL7001

EAN 4031582399127  
Order number 00770565



BETTER MOBILITY. BETTER LIFE.



Image may differ from the original product

## PERFORMANCE

Roll performance	● ● ● ● ●
Movement noise	● ● ● ● ●
Attrition	● ● ● ● ●
Corrosion resistance	● ● ● ● ●

## CORE ATTRIBUTES

Product name	Linea light
Type	Swivel castor with wheel brake
Standard	EN12528 - Furniture Castors
Load capacity at 1.8 mph	198.42 lb
Electric conductive	✓
Load capacity Static	396.83 lb
Temperature range (Minimum)	-4 °F
Temperature range (Maximum)	140 °F
Overall height	2.97 in
Overall width	2.17 in
Overall weight	0.33 lb

## WHEEL

Body material	Polyamide, electric conductive
Tread material	Polyurethane, injected, electric-conductive
Bearing	Plain bearing
Threadguards	Without threadguard
Diameter	2.95 in
Tread width	0.59 in
Hardness of tread (A)	92 Shore A

## HOUSING

Material	Polyamide
Fork shape	Twin wheel housing
Swivel bearing	Stem, swiveling
Color	Silver gray (RAL7001)
Offset	0.91 in
Swivel radius	3.19 in
Swivel interference	6.38 in
Dome diameter	1.18 in

## FITTING

Fitting type	Blind hole for B10 fitting
Bolt hole diameter	0.39 in



# LINEA LIGHT

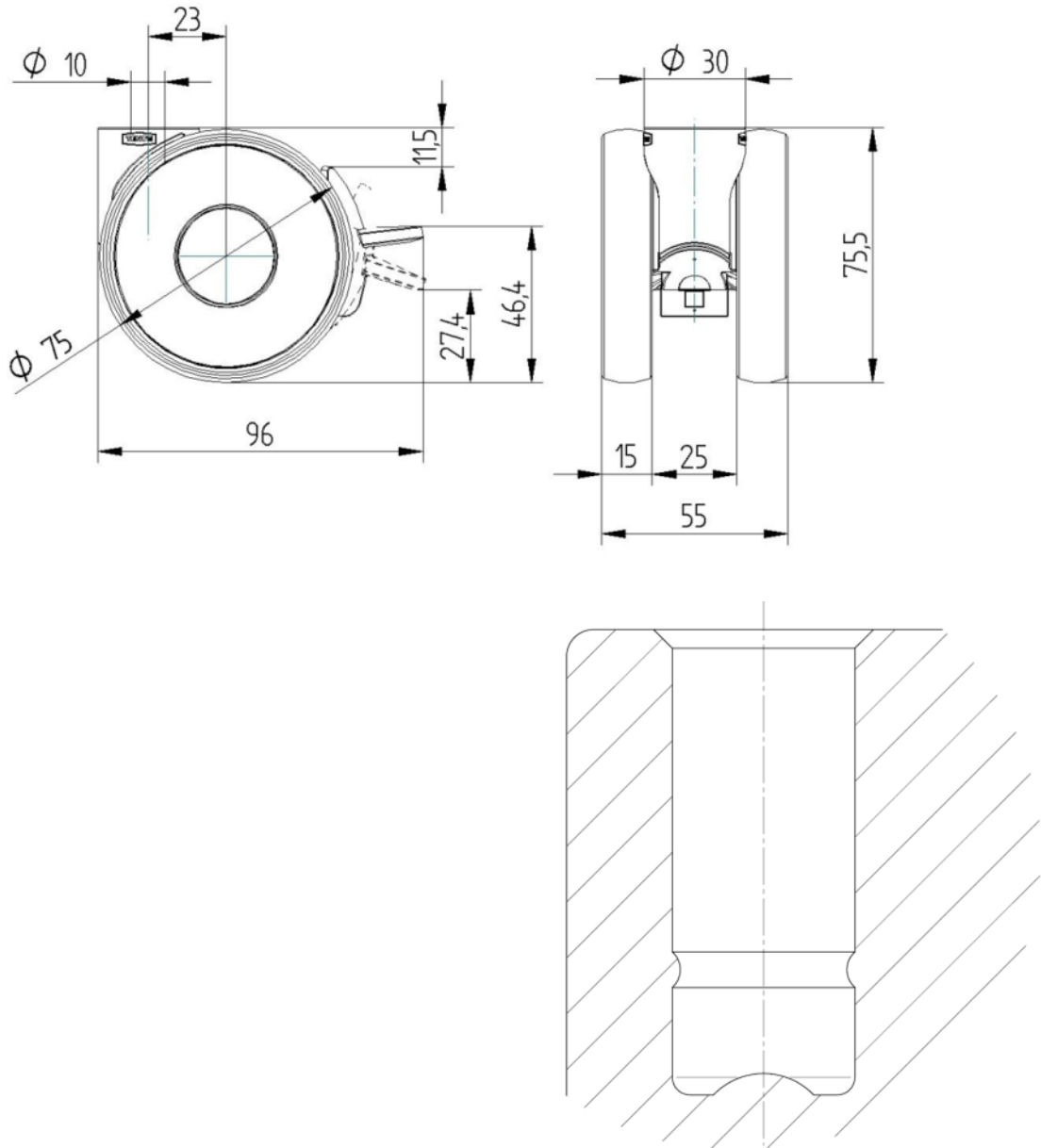
5925XSO075L51-10 RAL7001

EAN 4031582399127  
Order number 00770565



BETTER MOBILITY. BETTER LIFE.

## TECHNICAL DRAWINGS



Deutscher  
Designer  
Club



Interzum  
Award



IF  
Design  
Award