

GALEA

5070YGP100P30-12

EAN 4031582353891
Order number 00074602



BETTER MOBILITY. BETTER LIFE.

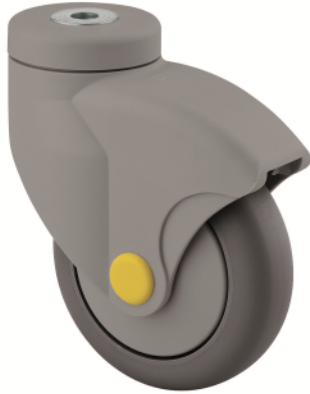


Image may differ from the original product

PERFORMANCE

Roll performance	● ● ● ○ ○
Movement noise	● ● ● ○ ○
Attrition	● ● ● ○ ○
Corrosion resistance	● ● ● ● ○

CORE ATTRIBUTES

Product name	Galea
Type	Swivel castor
Standard	EN12530 - Devices Castors
Load capacity at 3 km/h	100 kg
Electric conductive	✓
Load capacity Static	200 kg
Temperature range (Minimum)	-20 °C
Temperature range (Maximum)	60 °C
Overall height	139 mm

WHEEL

Body material	Polypropylene, electric conductive
Tread material	Thermoplastic rubber, electric-conductive
Bearing	Precision ball bearing
Threadguards	With threadguard
Diameter	100 mm
Tread width	30 mm
Hardness of tread (A)	87 Shore A

HOUSING

Material fork	Polyamide
Fork shape	Closed
Swivel bearing	Two ball races
Offset	40 mm
Swivel radius	90 mm
Swivel interference	180 mm

FITTING

Fitting type	Bolt hole
Bolt hole diameter	12 mm

GALEA

5070YGP100P30-12

EAN 4031582353891
Order number 00074602



BETTER MOBILITY. BETTER LIFE.

TECHNICAL DRAWINGS

