

ALPHA STAINLESS

8470UAD125P62 NATURAL/3004

EAN 4031582312423
Order number 00035122



BETTER MOBILITY. BETTER LIFE.

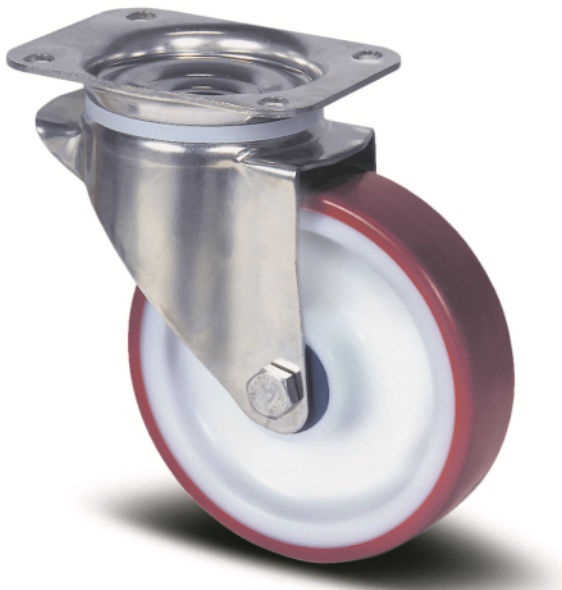


Image may differ from the original product

PERFORMANCE

Roll performance	●●●○○
Movement noise	●●●○○
Attrition	●●●●○
Corrosion resistance	●●●●●

CORE ATTRIBUTES

Product name	Alpha stainless
Type	Swivel castor
Standard	EN12532 - Transport Equipment
Load capacity at 4 km/h	200 kg
Stainless	✓
Load capacity Static	400 kg
Temperature range (Minimum)	-25 °C
Temperature range (Maximum)	80 °C
Overall height	155 mm
Overall width	75 mm
Overall weight	0.859 kg

WHEEL

Body material	Polyamide
Tread material	Polyurethane, injected
Bearing	Roller bearing, stainless
Axle	Screwed with nut
Wheel color	Natural white
Diameter	125 mm
Tread width	32 mm
Body width	32 mm
Hardness of tread (A)	92 Shore A
Hardness of tread (D)	42 Shore D

HOUSING

Material fork	Stainless steel, heavy
Fork shape	Broad
Swivel bearing	Two ball races
Colour	Stainless steel
Offset	40 mm
Swivel radius	102.5 mm
Swivel interference	205 mm
Dome diameter	75 mm

FITTING

Fitting type	Small rectangular plate
Plate length	105 mm
Plate width	85 mm
Plate hole length (Minimum)	77 mm
Plate hole length (Maximum)	60 mm
Plate hole width (Minimum)	77 mm
Plate hole width (Maximum)	80 mm
Plate hole diameter	9 mm

ALPHA STAINLESS

8470UAD125P62 NATURAL/3004

EAN 4031582312423
Order number 00035122



BETTER MOBILITY. BETTER LIFE.

TECHNICAL DRAWINGS

B470U00125P62-neu

