

FOOTMASTER

FOOT MASTER GATD-100-ASF-HUD

EAN 4031582495249
Order number 00800113



BETTER MOBILITY. BETTER LIFE.

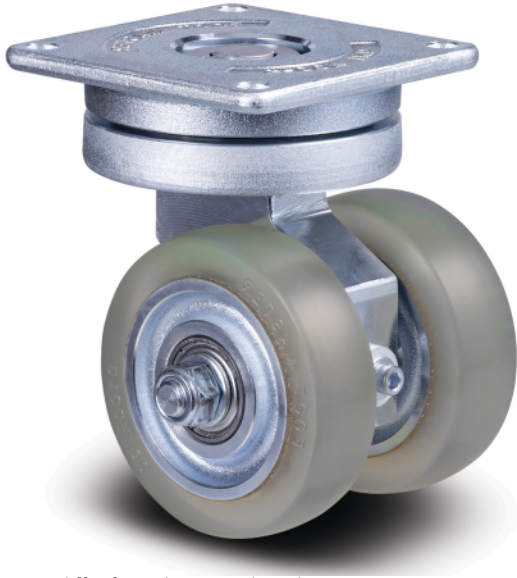


Image may differ from the original product

PERFORMANCE

Roll performance	○ ○ ○ ○ ○
Movement noise	○ ○ ○ ○ ○
Attrition	○ ○ ○ ○ ○
Corrosion resistance	○ ○ ○ ○ ○

CORE ATTRIBUTES

Product name	Footmaster
Type	Swivel castor
Load capacity at 1.8 mph	683.43 lb
Temperature range (Minimum)	14 °F
Temperature range (Maximum)	194 °F
Overall height	5.91 in
Overall width	5.16 in
Overall weight	15.45 lb

WHEEL

Bearing	Unmachined hub
Diameter	3.94 in
Tread width	1.18 in
Body width	1.18 in

HOUSING

Offset	1.18 in
Swivel radius	3.58 in
Swivel interference	7.17 in
Dome diameter	4.09 in

FITTING

Plate length	4.41 in
Plate width	4.41 in
Plate hole length (Maximum)	3.62 in
Plate hole width (Maximum)	3.62 in
Plate hole diameter	0.35 in

FOOTMASTER

FOOT MASTER GATD-100-ASF-HUD

EAN 4031582495249
Order number 00800113



BETTER MOBILITY. BETTER LIFE.

TECHNICAL DRAWINGS

