

LINEA LIGHT

5920XSO075L51-10 7001/7015/7001/1016

EAN 4031582399073



BETTER MOBILITY. BETTER LIFE.



Image may differ from the original product

PERFORMANCE

Roll Performance	● ● ● ● ●
Movement Noise	● ● ● ● ●
Attrition	● ● ● ● ●
Corrosion Resistance	● ● ● ● ●

CORE ATTRIBUTES

Product Name	Linea light
Type	Swivel castor
Standard	EN12528 - Furniture Castors
Load capacity at 3 km/h	90 kg
Electric Conductive	Yes
Stainless	No
Load capacity Static	180 kg
Temperature range (Minimum)	-20 °C
Temperature range (Maximum)	60 °C
Overall Height	75.5 mm
Overall width	55 mm
Overall weight	0.16 kg

HOUSING

Housing Material	Polyamide
Fork shape	Twin wheel housing
Swivel Bearing	Stem, swiveling
Housing Color	Silver grey (RAL7001)
Offset	23 mm
Swivel radius	65 mm
Swivel interference	130 mm
Dome diameter	30 mm

WHEEL

Body material	Polyamide, electric conductive
Tread Material Mix	Polyurethane, injected, electric-conductive
Bearing	Plain bearing
Tread Color	Slate grey (RAL7015)
Wheel Color	Slate grey (RAL7015)
Threadguards	Without threadguard
Diameter	75 mm
Tread width	15 mm
Axle Hole Diameter	0 mm
Hub Length	0 mm
Body width	15 mm
Hardness of tread (A)	92 Shore A

FITTING

Fitting type	Blind hole for B10
Bolt hole diameter	10 mm



Deutscher Designer Club



Interzum Award



IF Design Award



LINEA LIGHT

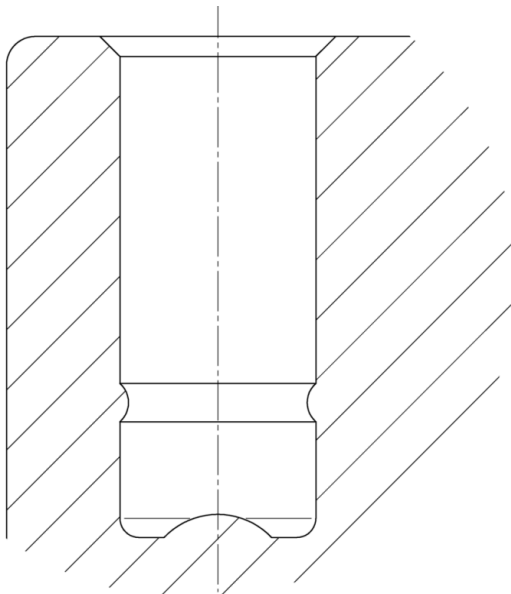
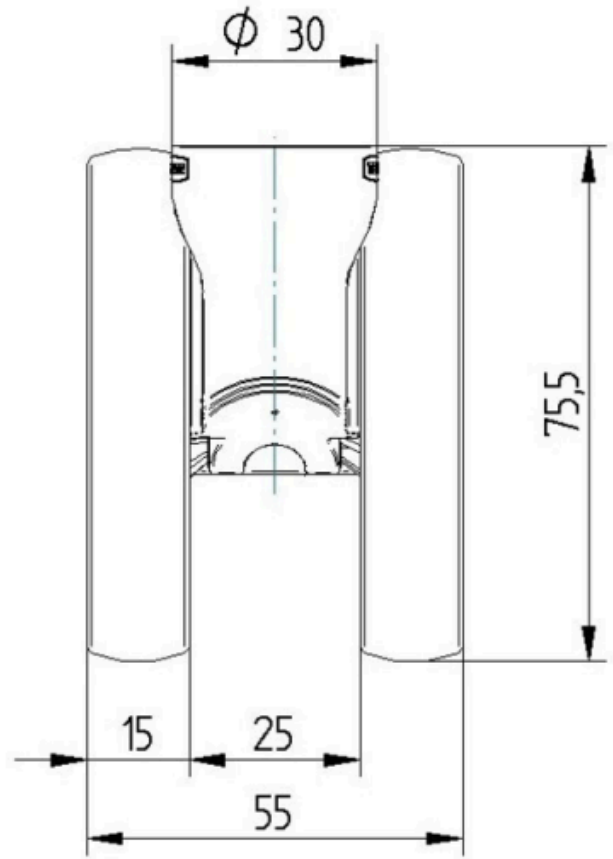
5920XSO075L51-10 7001/7015/7001/1016

EAN 4031582399073

Order number 00770563
Product Drawings



BETTER MOBILITY. BETTER LIFE.



Deutscher
Designer
Club



Interzum
Award



product
design
award

IF Design
Award