

LINEA CLINIC LOAD

5980UAP150R05-32

EAN 4031582382501
Order number 00039570



BETTER MOBILITY. BETTER LIFE.



Image may differ from the original product

PERFORMANCE

Roll performance	● ● ● ● ●
Movement noise	● ● ● ○ ○
Attrition	● ● ● ● ○
Corrosion resistance	● ● ● ● ○

CORE ATTRIBUTES

Product name	Linea clinic load
Type	Swivel castor
Standard	EN12530 - Devices Castors
Load capacity at 1.8 mph	440.92 lb
Load capacity Static	881.85 lb
Temperature range (Minimum)	14 °F
Temperature range (Maximum)	104 °F
Overall height	6.1 in
Overall width	2.8 in
Overall weight	3.72 lb

WHEEL

Body material	Polyamide
Tread material	Polyurethane, injected
Bearing	Precision ball bearing
Threadguards	With threadguard
Diameter	5.91 in
Tread width	0.59 in

HOUSING

Material	Polyamide
Fork shape	Twin wheel housing
Swivel bearing	Two ball races, reinforced or stainless
Offset	1.87 in
Swivel radius	4.82 in
Swivel interference	10 in

FITTING

Fitting type	Solid stem, round
Bolt diameter	1.26 in
Bolt length	1.77 in



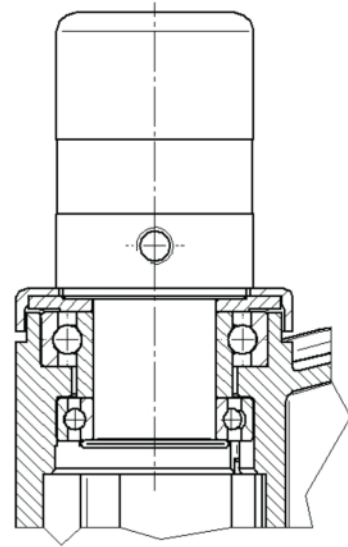
PRODUCT INFORMATION

LINEA CLINIC LOAD

5980UAP150R05-32

EAN 4031582382501
Order number 00039570

TECHNICAL DRAWINGS



Deutscher
Designer
Club



Interzum
Award



IF
Design
Award