

# LINEA

5940UAP125R05-32 CC R9002

EAN 4031582382617



BETTER MOBILITY. BETTER LIFE.



Image may differ from the original product

## PERFORMANCE

Roll performance	● ● ● ● ●
Movement noise	● ● ● ● ○
Attrition	● ● ● ● ○
Corrosion resistance	● ● ● ○ ○

## CORE ATTRIBUTES

Product name	Linea
Type	Swivel castor
Standard	EN12531 - Hospital Bed Castors
Load capacity at 1.8 mph	330.69 lb
Electric conductive	✓
Load capacity Static	992.08 lb
Temperature range (Minimum)	-4 °F
Temperature range (Maximum)	176 °F
Overall height	5.12 in
Overall width	2.8 in
Overall weight	2.19 lb

## WHEEL

Tread material	Polyurethane, injected
Bearing	Precision ball bearing
Threadguards	With threadguard
Diameter	4.92 in
Tread width	0.59 in
Hardness of tread (A)	92 Shore A

## HOUSING

Material	Polyamide
Fork shape	Twin wheel housing
Swivel bearing	Precision ball bearing
Offset	1.57 in
Swivel radius	4.04 in
Swivel interference	8.07 in
Hint	Housing with integrated cable catcher made of Polyethylene.

## FITTING

Fitting type	Solid stem, round
Bolt diameter	1.26 in
Bolt length	1.77 in



PRODUCT INFORMATION

# LINEA

5940UAP125R05-32 CC R9002

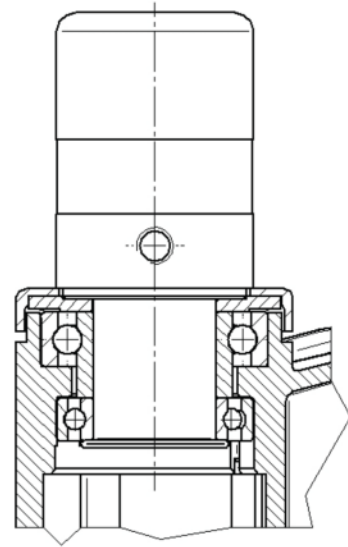
EAN 4031582382617



BETTER MOBILITY. BETTER LIFE.

TECHNICAL DRAWINGS

---



Deutscher  
Designer  
Club



Interzum  
Award



IF  
Design  
Award