

NOVATECH

ETY 070X20-Ø20 HL12

EAN 4031582331233
Order number 00835405



BETTER MOBILITY. BETTER LIFE.

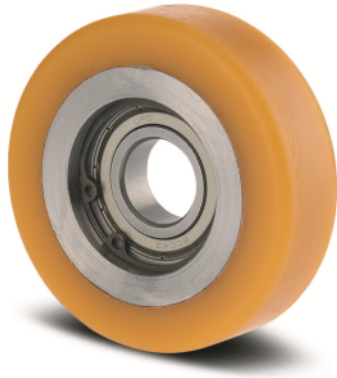


Image may differ from the original product

WHEEL

Body material	Steel, iron
Tread material	Polyurethane, casted
Bearing	Precision ball bearing (RS/2RS)
Wheel color	Honey yellow (RAL1005)
Threadguards	With threadguard
Diameter	2.76 in
Tread width	0.79 in
Axle hole diameter	0.79 in
Hub length	0.47 in
Body width	0.79 in
Hardness of tread (A)	92 Shore A
Hardness of tread (D)	42 Shore D

PERFORMANCE

Roll performance	● ● ● ● ○
Movement noise	● ● ● ○ ○
Attrition	● ● ● ● ○
Corrosion resistance	● ● ● ○ ○

CORE ATTRIBUTES

Product name	Novatech
Type	Wheel
Standard	EN12532 - Transport Equipment
Load capacity at 2.5 mph	264.55 lb
Load capacity at 3.7 mph	220.46 lb
Load capacity Static	529.11 lb
Temperature range (Minimum)	14 °F
Temperature range (Maximum)	140 °F
Overall weight	0.34 lb

NOVATECH

ETY 070X20-Ø20 HL12

EAN 4031582331233
Order number 00835405



BETTER MOBILITY. BETTER LIFE.

TECHNICAL DRAWINGS

