

LINEA

594CUAP150P30-13 RAL7001

EAN 4031582411409



BETTER MOBILITY. BETTER LIFE.

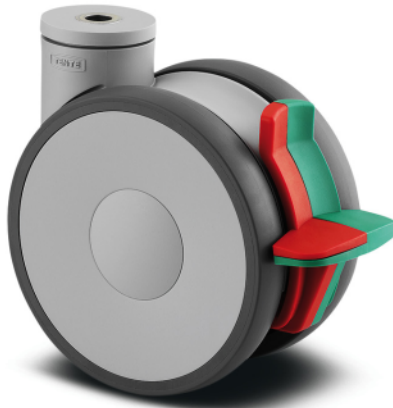


Image may differ from the original product

PERFORMANCE

| | |
|----------------------|-----------|
| Roll performance | ● ● ● ● ● |
| Movement noise | ● ● ● ● ○ |
| Attrition | ● ● ● ● ○ |
| Corrosion resistance | ● ● ● ● ○ |

CORE ATTRIBUTES

| | |
|-----------------------------|----------------------------------|
| Product name | Linea |
| Type | Swivel castor with combined lock |
| Standard | EN12530 - Devices Castors |
| Load capacity at 1.8 mph | 286.6 lb |
| Load capacity Static | 573.2 lb |
| Temperature range (Minimum) | -4 °F |
| Temperature range (Maximum) | 140 °F |
| Overall height | 6.69 in |
| Overall width | 3.5 in |
| Overall weight | 2.87 lb |
| Certification | Tested and monitored by TÜV Süd |

WHEEL

| | |
|-----------------------|------------------------|
| Body material | Polyamide |
| Tread material | Polyurethane, injected |
| Bearing | Precision ball bearing |
| Threadguards | With threadguard |
| Diameter | 5.91 in |
| Tread width | 0.87 in |
| Hardness of tread (A) | 92 Shore A |

HOUSING

| | |
|---------------------|------------------------|
| Material | Polyamide |
| Fork shape | Twin wheel housing |
| Swivel bearing | Precision ball bearing |
| Color | Silver gray (RAL7001) |
| Offset | 2.05 in |
| Swivel radius | 6.14 in |
| Swivel interference | 12.28 in |
| Dome diameter | 2.2 in |

FITTING

| | |
|--------------------|-----------|
| Fitting type | Bolt hole |
| Bolt hole diameter | 0.51 in |



LINEA

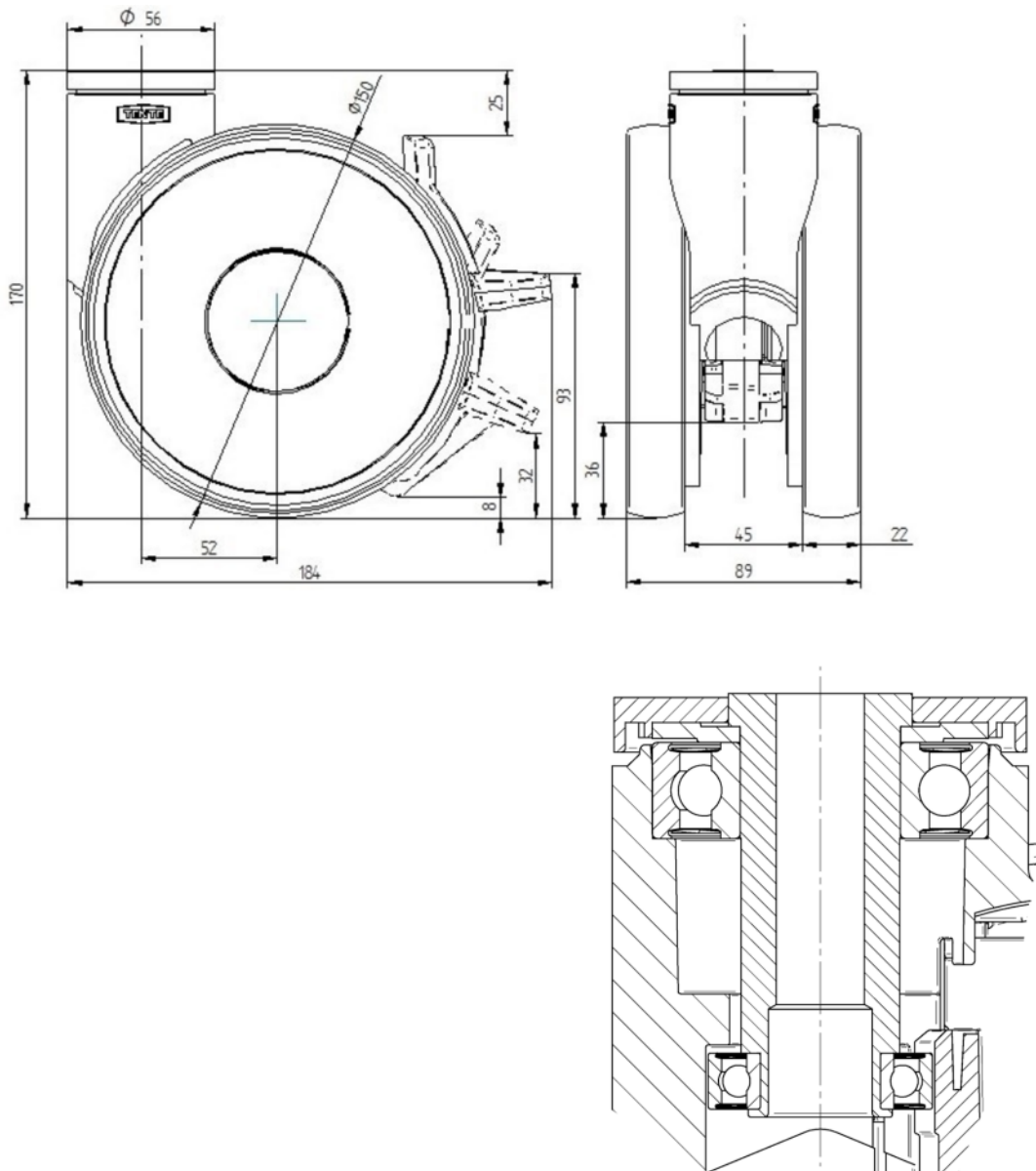
594CUAP150P30-13 RAL7001

EAN 4031582411409



BETTER MOBILITY. BETTER LIFE.

TECHNICAL DRAWINGS



Deutscher
Designer
Club



Interzum
Award



IF
Design
Award