

INTEGRAL TWIN

2944UAP125R26-28S45 D 9002 4xM8

EAN 4031582302547



BETTER MOBILITY. BETTER LIFE.



Image may differ from the original product

PERFORMANCE

| | |
|----------------------|-------------|
| Roll Performance | ● ● ● ● ● ● |
| Movement Noise | ● ● ● ○ ○ |
| Attrition | ● ● ● ● ● ○ |
| Corrosion Resistance | ● ● ● ○ ○ |

CORE ATTRIBUTES

| | |
|-----------------------------|---|
| Product Name | Integral twin |
| Type | Swivel castor with central, total or directional lock |
| Standard | EN12531 - Hospital Bed Castors |
| Load capacity at 3 km/h | 125 kg |
| Load capacity at 4 km/h | 125 kg |
| Electric Conductive | No |
| Stainless | No |
| Load capacity Static | 375 kg |
| Temperature range (Minimum) | -25 °C |
| Temperature range (Maximum) | 80 °C |
| Overall Height | 150 mm |
| Overall width | 63 mm |
| Overall weight | 1.16 kg |
| Certification | Tested and monitored by TÜV Süd |

HOUSING

| | |
|---------------------|------------------------|
| Housing Material | Steel sheet, medium |
| Fork shape | Twin wheel housing |
| Swivel Bearing | Precision ball bearing |
| Housing Color | Grey white (RAL9002) |
| Offset | 37.5 mm |
| Swivel radius | 103 mm |
| Swivel interference | 206 mm |
| Dome diameter | 61.5 mm |

WHEEL

| | |
|-----------------------|------------------------|
| Body material | Polyamide |
| Tread Material Mix | Polyurethane, injected |
| Bearing | Precision ball bearing |
| Wheel Color | Grey white (RAL9002) |
| Threadguards | With threadguard |
| Diameter | 125 mm |
| Tread width | 12 mm |
| Body width | 12 mm |
| Hardness of tread (A) | 92 Shore A |
| Hardness of tread (D) | 42 Shore D |

FITTING

| | |
|------------------------------|-------------------------------------|
| Brake cam | hex cam |
| Fitting type | Stem with cam hole for profile bars |
| Bolt diameter | 28 mm |
| Bolt length | 96 mm |
| Bolt thread position | 19 mm |
| Bolt mounting holes quantity | 4 |



German Design Award



Red Dot Design Award

INTEGRAL TWIN

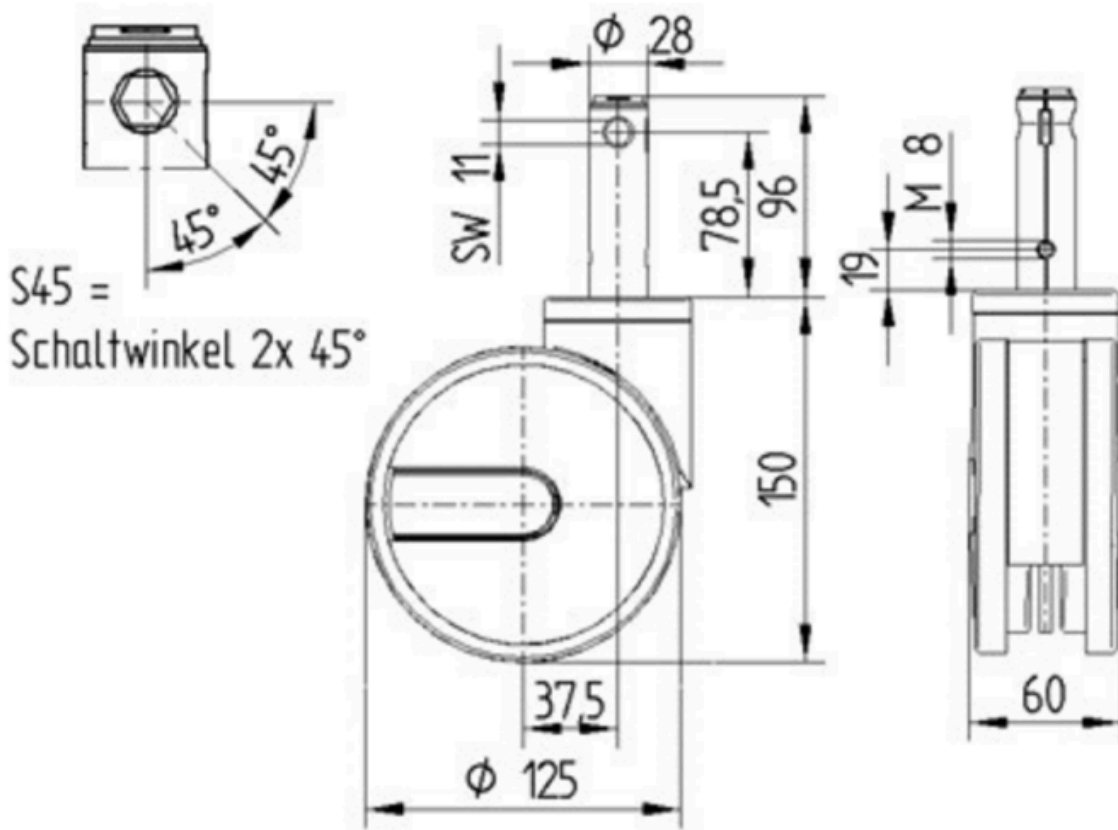
2944UAP125R26-28S45 D 9002 4xM8

EAN 4031582302547

Order number 00032918
Product Drawings



BETTER MOBILITY. BETTER LIFE.



German
Design
Award



Red Dot
Design
Award