

# FOOTMASTER

FOOT MASTER GATD-075-ASF-HUD

EAN 4031582495232  
Order number 00800112



BETTER MOBILITY. BETTER LIFE.

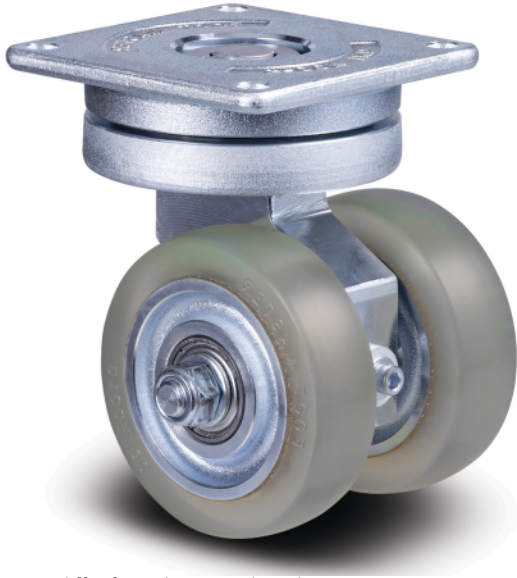


Image may differ from the original product

## PERFORMANCE

|                      |           |
|----------------------|-----------|
| Roll performance     | ○ ○ ○ ○ ○ |
| Movement noise       | ○ ○ ○ ○ ○ |
| Attrition            | ○ ○ ○ ○ ○ |
| Corrosion resistance | ○ ○ ○ ○ ○ |

## CORE ATTRIBUTES

|                             |               |
|-----------------------------|---------------|
| Product name                | Footmaster    |
| Type                        | Swivel castor |
| Load capacity at 3 km/h     | 250 kg        |
| Temperature range (Minimum) | -10 °C        |
| Temperature range (Maximum) | 90 °C         |
| Overall height              | 123 mm        |
| Overall width               | 131 mm        |
| Overall weight              | 5.56 kg       |

## WHEEL

|             |                |
|-------------|----------------|
| Bearing     | Unmachined hub |
| Diameter    | 75 mm          |
| Tread width | 30 mm          |
| Body width  | 30 mm          |

## HOUSING

|                     |        |
|---------------------|--------|
| Offset              | 30 mm  |
| Swivel radius       | 81 mm  |
| Swivel interference | 162 mm |
| Dome diameter       | 104 mm |

## FITTING

|                             |        |
|-----------------------------|--------|
| Plate length                | 112 mm |
| Plate width                 | 112 mm |
| Plate hole length (Maximum) | 92 mm  |
| Plate hole width (Maximum)  | 92 mm  |
| Plate hole diameter         | 9 mm   |

# FOOTMASTER

FOOT MASTER GATD-075-ASF-HUD

EAN 4031582495232  
Order number 00800112



BETTER MOBILITY. BETTER LIFE.

## TECHNICAL DRAWINGS

