

# LINEA

594CUAP125P30-11/180/1D 9002/K3000

EAN 4031582378290



BETTER MOBILITY. BETTER LIFE.



Image may differ from the original product

## PERFORMANCE

Roll Performance	● ● ● ● ●
Movement Noise	● ● ● ○ ○
Attrition	● ● ● ● ○
Corrosion Resistance	● ● ● ● ○

## CORE ATTRIBUTES

Product Name	Linea
Type	Swivel castor with combined lock
Standard	EN12530 - Devices Castors
Load capacity at 3 km/h	130 kg
Electric Conductive	No
Stainless	No
Load capacity Static	260 kg
Temperature range (Minimum)	-20 °C
Temperature range (Maximum)	60 °C
Overall Height	143 mm
Overall width	82 mm
Overall weight	1.01 kg
Certification	Tested and monitored by TÜV Süd

## HOUSING

Housing Material	Polyamide
Fork shape	Twin wheel housing
Swivel Bearing	Precision ball bearing
Housing Color	Grey white (RAL9002)
Offset	40 mm
Swivel radius	129 mm
Swivel interference	258 mm
Dome diameter	52 mm

## WHEEL

Body material	Polyamide
Tread Material Mix	Polyurethane, injected
Bearing	Precision ball bearing
Tread Color	Slate grey (RAL7015)
Wheel Color	Slate grey (RAL7015)
Threadguards	With threadguard
Diameter	125 mm
Tread width	20 mm
Axle Hole Diameter	0 mm
Hub Length	0 mm
Body width	20 mm
Hardness of tread (A)	92 Shore A

## FITTING

Fitting type	Bolt hole
Bolt hole diameter	11 mm



Deutscher Designer Club



Interzum Award



IF Design Award

product design award

# LINEA

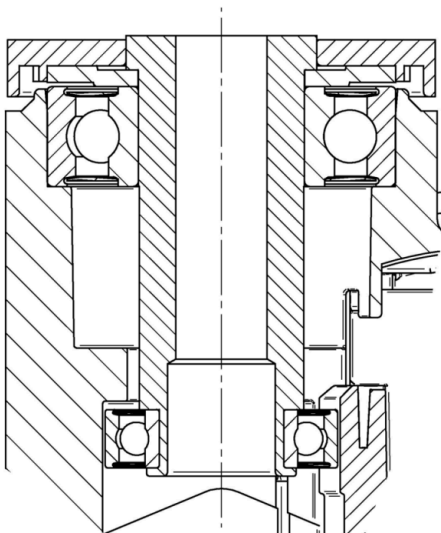
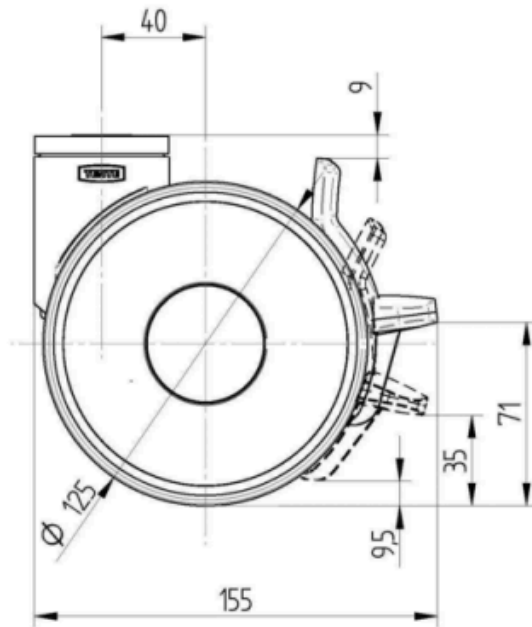
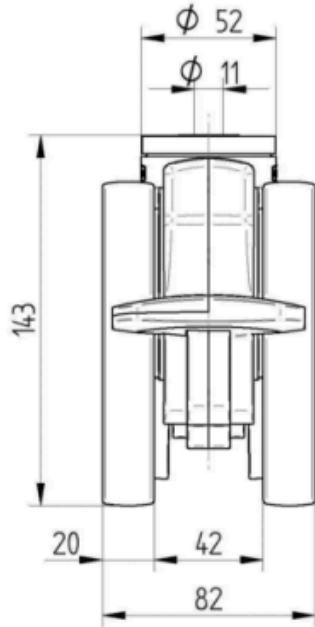
594CUAP125P30-11/180/1D 9002/K3000

EAN 4031582378290

Order number 00771208  
Product Drawings



BETTER MOBILITY. BETTER LIFE.



Deutscher  
Designer  
Club



Interzum  
Award



product  
design  
award

IF Design  
Award