

AGILA

2475UAP050P30-11

EAN 4031582404302
Order number 00033321



BETTER MOBILITY. BETTER LIFE.

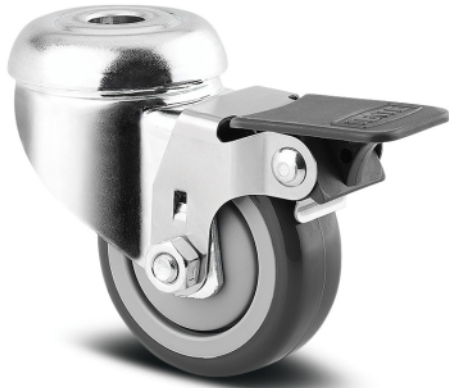


Image may differ from the original product

PERFORMANCE

Roll performance	● ● ● ○ ○
Movement noise	● ● ● ○ ○
Attrition	● ● ● ● ○
Corrosion resistance	● ● ● ○ ○

CORE ATTRIBUTES

Product name	Agila
Type	Swivel castor with wheel brake
Standard	EN12530 - Devices Castors
Load capacity at 1.8 mph	88.18 lb
Load capacity Static	176.37 lb
Temperature range (Minimum)	-4 °F
Temperature range (Maximum)	140 °F
Overall height	2.72 in
Overall width	1.69 in
Overall weight	0.39 lb

WHEEL

Body material	Polyamide
Tread material	Polyurethane, injected
Bearing	Precision ball bearing
Wheel color	Silver gray (RAL7001)
Threadguards	With threadguard
Diameter	1.97 in
Tread width	0.75 in
Body width	0.75 in
Hardness of tread (A)	92 Shore A
Hardness of tread (D)	42 Shore D

HOUSING

Material	Steel sheet, medium
Fork shape	Broad
Swivel bearing	Two ball races
Color	Blue passivated
Offset	0.94 in
Swivel radius	3.23 in
Swivel interference	6.46 in
Dome diameter	1.61 in

FITTING

Fitting type	Bolt hole
Bolt hole diameter	0.43 in
Hint	Castors can be mounted with standard screws of any length.

AGILA

2475UAP050P30-11

EAN 4031582404302
Order number 00033321



BETTER MOBILITY. BETTER LIFE.

TECHNICAL DRAWINGS

