

OMIKRON TWIN

9958FTP250P66 TFR

EAN 4031582394320



BETTER MOBILITY. BETTER LIFE.

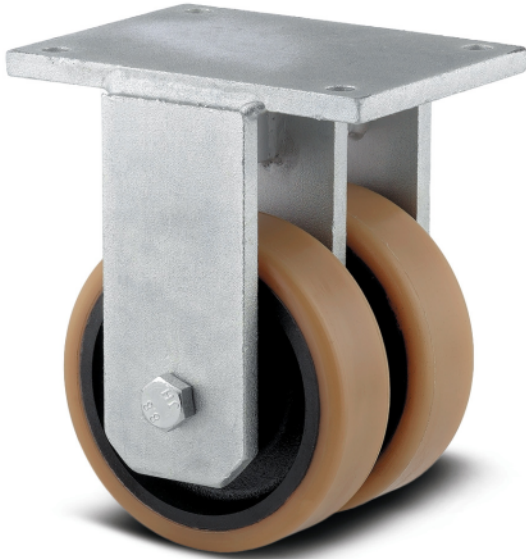


Image may differ from the original product

PERFORMANCE

Roll performance	● ● ● ● ○
Movement noise	● ● ● ○ ○
Attrition	● ● ● ● ○
Corrosion resistance	● ● ● ○ ○

CORE ATTRIBUTES

Product name	Omikron twin
Type	Fixed castor
Standard	EN12533 - Heavy Duty Castors
Load capacity at 4 km/h	2880 kg
Load capacity at 6 km/h	2400 kg
Load capacity Static	5760 kg
Temperature range (Minimum)	-20 °C
Temperature range (Maximum)	60 °C
Overall height	325 mm

WHEEL

Body material	Cast iron
Tread material	Polyurethane, casted
Bearing	Precision ball bearing
Axle	Screwed with nut
Threadguards	With threadguard
Diameter	250 mm
Tread width	50 mm
Hardness of tread (A)	92 Shore A

HOUSING

Material fork	Iron forged, heavy
Fork shape	Twin wheel housing
Lubrication nipple	✓

FITTING

Fitting type	Large rectangular heavy-duty plate
Plate length	250 mm
Plate width	200 mm
Plate hole length (Maximum)	210 mm
Plate hole width (Maximum)	160 mm
Plate hole diameter	17 mm