

# ALPHA STAINLESS

8470UAD100P62 NATURAL/3004

EAN 4031582312409  
Order number 00035119



BETTER MOBILITY. BETTER LIFE.

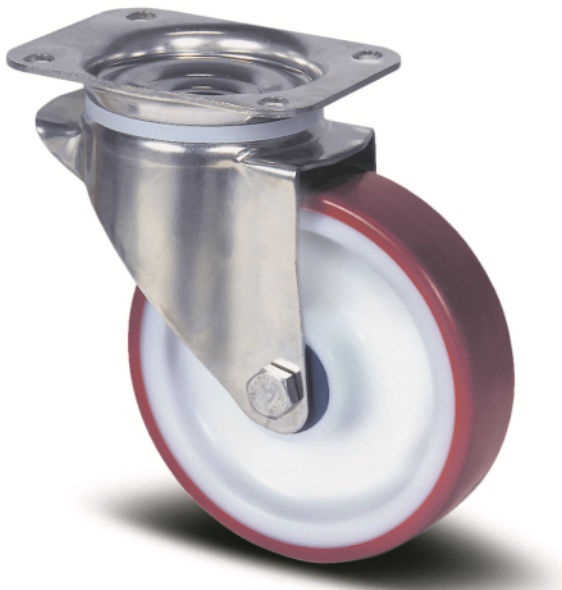


Image may differ from the original product

## PERFORMANCE

Roll performance	●●●○○
Movement noise	●●●○○
Attrition	●●●●○
Corrosion resistance	●●●●●

## CORE ATTRIBUTES

Product name	Alpha stainless
Type	Swivel castor
Standard	EN12532 - Transport Equipment
Load capacity at 2.5 mph	330.69 lb
Stainless	✓
Load capacity Static	661.39 lb
Temperature range (Minimum)	-13 °F
Temperature range (Maximum)	176 °F
Overall height	5.04 in
Overall width	2.95 in
Overall weight	1.63 lb

## WHEEL

Body material	Polyamide
Tread material	Polyurethane, injected
Bearing	Roller bearing, stainless
Axle	Screwed with nut
Wheel color	Natural white
Diameter	3.94 in
Tread width	1.26 in
Body width	1.26 in
Hardness of tread (A)	92 Shore A
Hardness of tread (D)	42 Shore D

## HOUSING

Material	Stainless steel, heavy
Fork shape	Broad
Swivel bearing	Two ball races
Color	Stainless steel
Offset	1.61 in
Swivel radius	3.58 in
Swivel interference	7.17 in
Dome diameter	2.95 in

## FITTING

Fitting type	Rectangular plate
Plate length	4.13 in
Plate width	3.35 in
Plate hole length (Minimum)	3.03 in
Plate hole length (Maximum)	2.36 in
Plate hole width (Minimum)	3.03 in
Plate hole width (Maximum)	3.15 in
Plate hole diameter	0.35 in

# ALPHA STAINLESS

8470UAD100P62 NATURAL/3004

EAN 4031582312409  
Order number 00035119



BETTER MOBILITY. BETTER LIFE.

## TECHNICAL DRAWINGS

