

ALPHA REVERSE

347BUFP125P62 180°

EAN 4031582430608



BETTER MOBILITY. BETTER LIFE.



Image may differ from the original product

PERFORMANCE

Roll performance	● ● ● ○ ○
Movement noise	● ● ● ● ●
Attrition	● ● ● ○ ○
Corrosion resistance	● ● ● ○ ○

CORE ATTRIBUTES

Product name	Alpha reverse
Type	Swivel castor with total lock and spring loaded directional lock
Standard	EN12532 - Transport Equipment
Load capacity at 4 km/h	250 kg
Load capacity Static	500 kg
Temperature range (Minimum)	-20 °C
Temperature range (Maximum)	80 °C
Overall height	155 mm
Overall weight	1.294 kg

WHEEL

Body material	Polyamide
Tread hardness	soft
Tread material	Elastic tire, non-marking, vulcanized
Bearing	Precision ball bearing
Axle	Screwed with nut
Threadguards	With threadguard
Diameter	125 mm
Tread width	40 mm
Hardness of tread (A)	64 Shore A

HOUSING

Material fork	Steel sheet, heavy
Fork shape	Broad
Swivel bearing	Two ball races
Offset	40 mm
Swivel radius	123 mm
Swivel interference	246 mm

FITTING

Fitting type	Small rectangular plate
Plate length	105 mm
Plate width	80 mm
Plate hole length (Minimum)	77 mm
Plate hole length (Maximum)	80 mm
Plate hole width (Maximum)	60 mm
Plate hole diameter	9 mm

ALPHA REVERSE

347BUFP125P62 180°

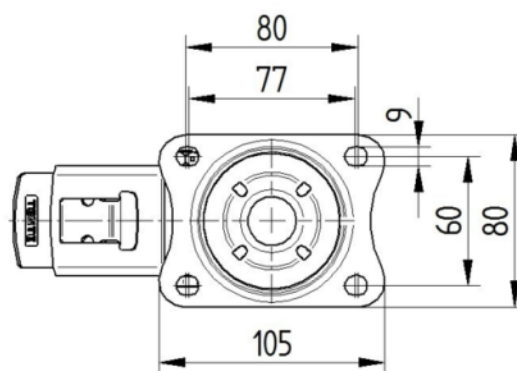
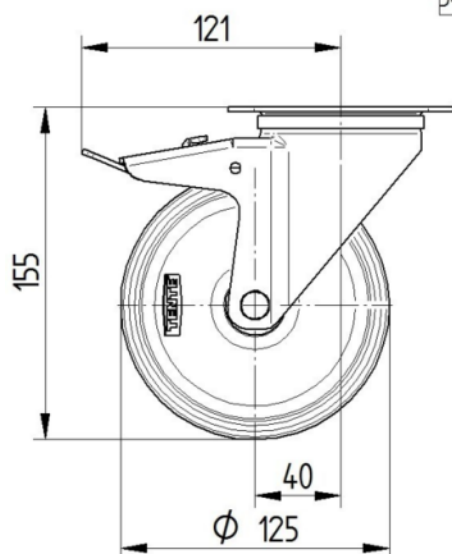
EAN 4031582430608



BETTER MOBILITY. BETTER LIFE.

TECHNICAL DRAWINGS

3477U00125P62-neu



Platte 3470-080P62-105x80

