

STYLEA

5925UAP075P40 60X60 RAL9002 TFR

EAN 4031582394504



BETTER MOBILITY. BETTER LIFE.

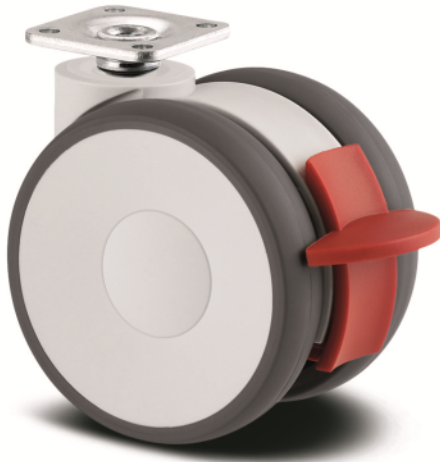


Image may differ from the original product

PERFORMANCE

Roll performance	● ● ● ○ ○
Movement noise	● ● ● ○ ○
Attrition	● ● ● ○ ○
Corrosion resistance	● ● ● ● ○

CORE ATTRIBUTES

Product name	Stylea
Type	Swivel castor with wheel brake
Standard	EN12528 - Furniture Castors
Load capacity at 3 km/h	80 kg
Load capacity Static	160 kg
Temperature range (Minimum)	-10 °C
Temperature range (Maximum)	40 °C
Overall height	75 mm
Overall width	54 mm

WHEEL

Body material	Polyamide
Tread material	Polyurethane, injected
Bearing	Precision ball bearing
Axle	Riveted
Threadguards	With threadguard
Diameter	75 mm
Tread width	15 mm

HOUSING

Material fork	Polyamide
Fork shape	Twin wheel housing
Swivel bearing	Stem, swiveling
Colour	Grey white (RAL9002)
Offset	23 mm
Swivel radius	81 mm
Swivel interference	162 mm
Dome diameter	30 mm

FITTING

Fitting type	Square plate
Plate length	60 mm
Plate width	60 mm
Plate hole length (Maximum)	48 mm
Plate hole width (Maximum)	48 mm

PRODUCT INFORMATION

STYLEA

5925UAP075P40 60X60 RAL9002 TFR

EAN 4031582394504



BETTER MOBILITY. BETTER LIFE.

TECHNICAL DRAWINGS

