

INTEGRAL SMART

1040UAP100R05-28 RAL9002

EAN 4031582455335
Order number 00064518w



BETTER MOBILITY. BETTER LIFE.



Image may differ from the original product

PERFORMANCE

Roll performance	● ● ● ● ○
Movement noise	● ● ● ○ ○
Attrition	● ● ● ● ○
Corrosion resistance	● ● ● ○ ○

CORE ATTRIBUTES

Product name	Integral smart
Type	Swivel castor with central , total lock
Standard	EN12531 - Hospital Bed Castors
Load capacity at 1.8 mph	220.46 lb
Load capacity at 2.5 mph	220.46 lb
Load capacity Static	440.92 lb
Temperature range (Minimum)	-13 °F
Temperature range (Maximum)	-13 °F
Overall height	5.12 in
Overall width	2.44 in
Overall weight	2 lb
Certification	Tested and monitored by TÜV Süd

WHEEL

Body material	Polyamide
Tread material	Polyurethane, injected
Bearing	Precision ball bearing
Threadguards	Integrated threadguard
Diameter	3.94 in
Tread width	1.26 in
Hardness of tread (D)	42 Shore D

HOUSING

Material	Steel sheet, light
Fork shape	Closed
Swivel bearing	Precision ball bearing
Color	Gray white (RAL9002)
Offset	1.57 in
Swivel radius	3.54 in
Swivel interference	7.09 in
Dome diameter	2.44 in

FITTING

Fitting type	Solid stem, round
Bolt diameter	1.1 in
Bolt length	1.77 in



IF Design Award



Red Dot Design Award

INTEGRAL SMART

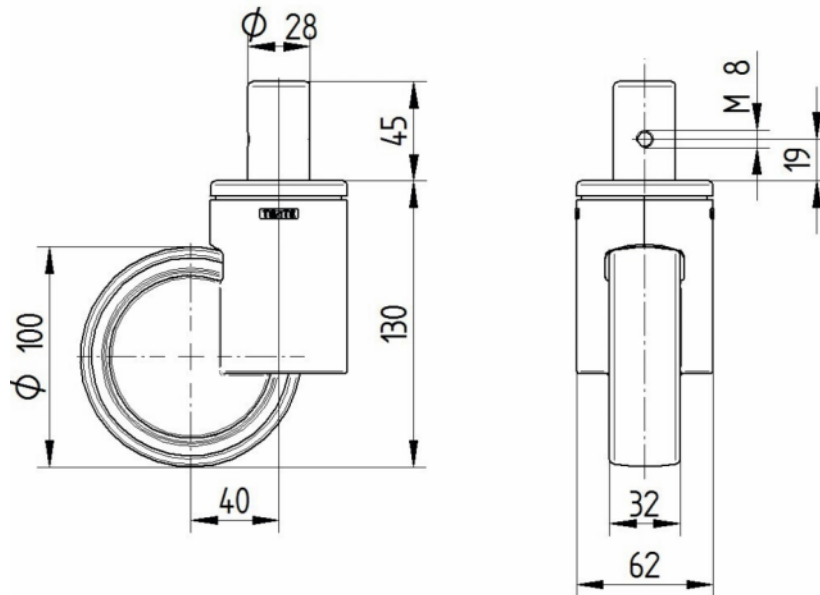
1040UAP100R05-28 RAL9002

EAN 4031582455335
Order number 00064518w



BETTER MOBILITY. BETTER LIFE.

TECHNICAL DRAWINGS



IF
Design
Award



Red Dot
Design
Award