

LINEA CLINIC

5946UAC150R36-32S30 CC R9002

EAN 4031582382877



BETTER MOBILITY. BETTER LIFE.



Image may differ from the original product

PERFORMANCE

| | |
|----------------------|-----------|
| Roll performance | ● ● ● ● ● |
| Movement noise | ● ● ● ○ ○ |
| Attrition | ● ● ● ● ○ |
| Corrosion resistance | ● ● ● ● ○ |

CORE ATTRIBUTES

| | |
|-----------------------------|---|
| Product name | Linea clinic |
| Type | Swivel castor with central , total lock |
| Standard | similar EN12531- Hospital Bed Castors |
| Load capacity at 1.8 mph | 330.69 lb |
| Load capacity at 2.5 mph | 330.69 lb |
| Stainless | ✓ |
| Load capacity Static | 661.39 lb |
| Temperature range (Minimum) | 14 °F |
| Temperature range (Maximum) | 104 °F |
| Overall height | 6.1 in |
| Overall width | 2.8 in |
| Overall weight | 2.56 lb |

Certification Tested and monitored by TÜV Süd



Deutscher Designer Club



Interzum Award



IF Design Award

WHEEL

| | |
|-----------------------|-----------------------------------|
| Body material | Polyamide |
| Tread material | Polyurethane, injected |
| Bearing | Precision ball bearing, stainless |
| Threadguards | With threadguard |
| Diameter | 5.91 in |
| Tread width | 0.59 in |
| Hardness of tread (A) | 92 Shore A |

HOUSING

| | |
|---------------------|---|
| Material | Polyamide |
| Fork shape | Twin wheel housing |
| Swivel bearing | Precision ball bearing |
| Offset | 1.87 in |
| Swivel radius | 4.82 in |
| Swivel interference | 10 in |
| Hint | Housing with integrated cable catcher made of Polyethylene. |

FITTING

| | |
|---------------|--|
| Fitting type | Stem with cam hole for profile bars, short version |
| Bolt diameter | 1.26 in |
| Bolt length | 1.97 in |
| Hint | Washable beds must be sealed in the fitting area by the hospital bed manufacturer. |

PRODUCT INFORMATION

LINEA CLINIC

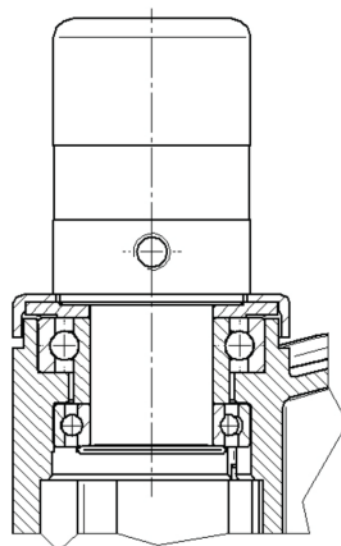
5946UAC150R36-32S30 CC R9002

EAN 4031582382877



BETTER MOBILITY. BETTER LIFE.

TECHNICAL DRAWINGS



Deutscher
Designer
Club



Interzum
Award



IF
Design
Award