

INTEGRAL

2046XSX200R26-28S45 D 9002 4xM8 W

EAN 4031582342086



BETTER MOBILITY. BETTER LIFE.



Image may differ from the original product

PERFORMANCE

Roll Performance	● ● ● ● ○ ○
Movement Noise	● ● ● ● ○ ○
Attrition	● ● ● ● ● ○
Corrosion Resistance	● ● ● ● ○ ○

CORE ATTRIBUTES

Product Name	Integral
Type	Swivel castor with central, total lock
Standard	EN12531 - Hospital Bed Castors
Load capacity at 3 km/h	150 kg
Load capacity at 4 km/h	150 kg
Electric Conductive	Yes
Stainless	No
Load capacity Static	450 kg
Temperature range (Minimum)	-25 °C
Temperature range (Maximum)	80 °C
Overall Height	229 mm
Overall width	70 mm
Overall weight	1.59 kg
Certification	Tested and monitored by TÜV Süd

HOUSING

Housing Material	Steel sheet, medium
Fork shape	Closed
Swivel Bearing	Precision ball bearing
Housing Color	Grey white (RAL9002)
Offset	60 mm
Swivel radius	160 mm
Swivel interference	320 mm
Dome diameter	70 mm

WHEEL

Body material	Polyamide, electric conductive
Tread Material Mix	Polyurethane, injected, electric-conductive
Bearing	Precision ball bearing, sealed
Tread Color	Slate grey (similar RAL7015)
Wheel Color	Slate grey (RAL7015)
Threadguards	Integrated threadguard
Diameter	200 mm
Tread width	35 mm
Body width	35 mm
Hardness of tread (D)	59 Shore D

FITTING

Brake cam	hex cam
Fitting type	Stem with cam hole for profile bars
Bolt diameter	28 mm
Bolt length	96 mm
Bolt thread position	19 mm
Bolt mounting holes quantity	4
Hint	Washable beds must be sealed in the fitting area by the hospital bed manufacturer.



IF Design Award



Red Dot Design Award

INTEGRAL

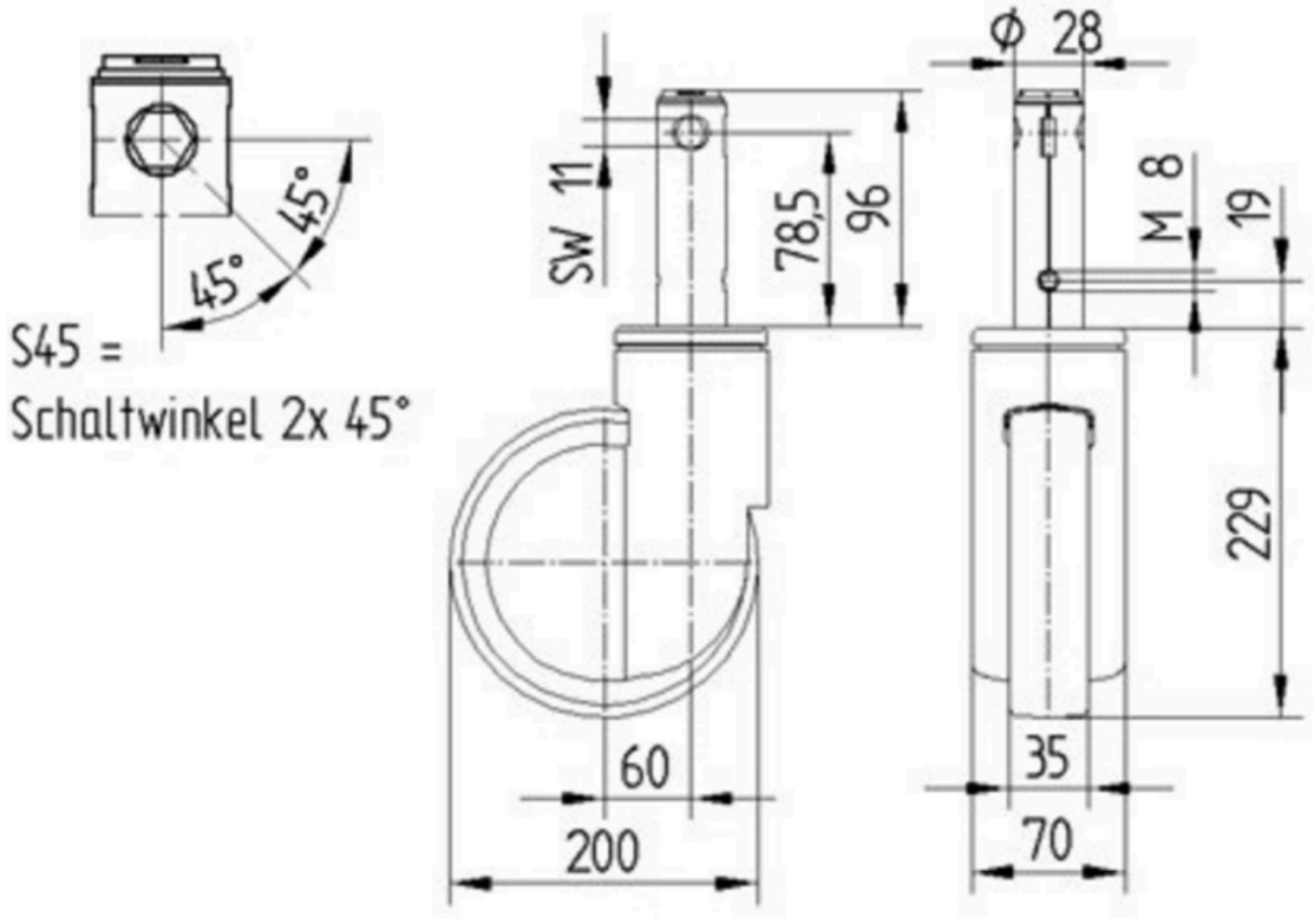
2046XSX200R26-28S45 D 9002 4xM8 W

EAN 4031582342086

Order number 00036807
Product Drawings



BETTER MOBILITY. BETTER LIFE.



IF Design Award



Red Dot Design Award