

LINEA

5940UAP125R05-32 CC R9002

EAN 4031582382617



BETTER MOBILITY. BETTER LIFE.



Image may differ from the original product

PERFORMANCE

Roll performance	● ● ● ● ●
Movement noise	● ● ● ● ○
Attrition	● ● ● ● ○
Corrosion resistance	● ● ● ○ ○

CORE ATTRIBUTES

Product name	Linea
Type	Swivel castor
Standard	EN12531 - Hospital Bed Castors
Load capacity at 3 km/h	150 kg
Electric conductive	✓
Load capacity Static	450 kg
Temperature range (Minimum)	-20 °C
Temperature range (Maximum)	80 °C
Overall height	130 mm
Overall width	71 mm
Overall weight	0.994 kg

WHEEL

Tread material	Polyurethane, injected
Bearing	Precision ball bearing
Threadguards	With threadguard
Diameter	125 mm
Tread width	15 mm
Hardness of tread (A)	92 Shore A

HOUSING

Material fork	Polyamide
Fork shape	Twin wheel housing
Swivel bearing	Precision ball bearing
Offset	40 mm
Swivel radius	102.5 mm
Swivel interference	205 mm
Hint	Housing with integrated cable catcher made of Polyethylene.

FITTING

Fitting type	Solid stem, round
Bolt diameter	32 mm
Bolt length	45 mm



PRODUCT INFORMATION

LINEA

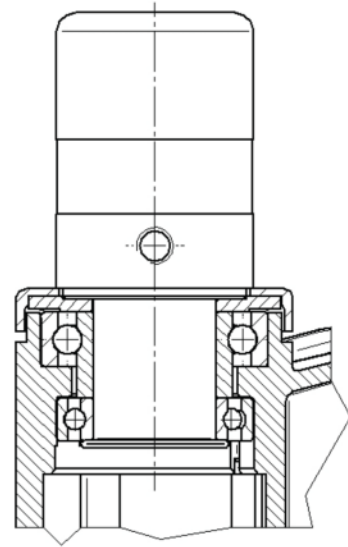
5940UAP125R05-32 CC R9002

EAN 4031582382617



BETTER MOBILITY. BETTER LIFE.

TECHNICAL DRAWINGS



Deutscher
Designer
Club



Interzum
Award



IF
Design
Award