

ALPHA STAINLESS

8477UFD200P63

EAN 4031582347067
Order number 00035541



BETTER MOBILITY. BETTER LIFE.

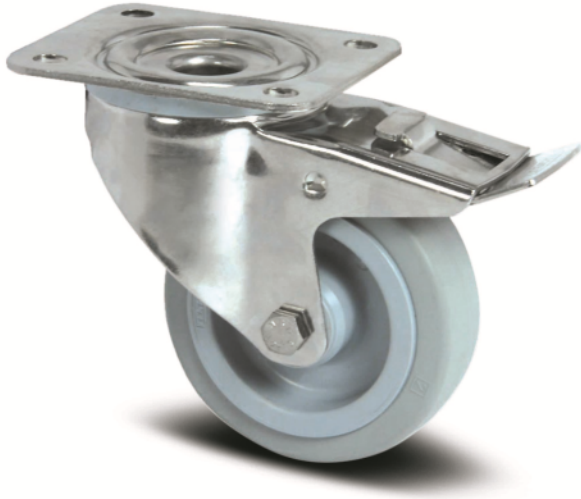


Image may differ from the original product

PERFORMANCE

Roll performance	● ● ● ● ○
Movement noise	● ● ● ● ○
Attrition	● ● ● ○ ○
Corrosion resistance	● ● ● ● ●

CORE ATTRIBUTES

Product name	Alpha stainless
Type	Swivel castor with total lock
Standard	EN12532 - Transport Equipment
Load capacity at 4 km/h	400 kg
Stainless	✓
Load capacity Static	800 kg
Temperature range (Minimum)	-20 °C
Temperature range (Maximum)	80 °C
Overall height	240 mm
Overall width	96 mm
Overall weight	2.956 kg

WHEEL

Body material	Polyamide
Tread hardness	soft
Tread material	Elastic tire, non-marking, vulcanized
Bearing	Roller bearing, stainless
Axle	Screwed with nut
Wheel color	Silver grey (RAL7001)
Diameter	200 mm
Tread width	46 mm
Body width	46 mm
Hardness of tread (A)	63 Shore A

HOUSING

Material fork	Stainless steel, heavy
Fork shape	Broad
Swivel bearing	Two ball races
Colour	Stainless steel
Offset	55 mm
Swivel radius	167 mm
Swivel interference	334 mm
Dome diameter	96 mm

FITTING

Fitting type	Medium rectangular plate
Plate length	137 mm
Plate width	105 mm
Plate hole length (Minimum)	75 mm
Plate hole length (Maximum)	80 mm
Plate hole width (Minimum)	75 mm
Plate hole width (Maximum)	105 mm
Plate hole diameter	11 mm

ALPHA STAINLESS

8477UFD200P63

EAN 4031582347067
Order number 00035541



BETTER MOBILITY. BETTER LIFE.

TECHNICAL DRAWINGS

