

# KAPPA

9682ITP250P63 CL67

EAN 4031582315974  
Order number 00827807



BETTER MOBILITY. BETTER LIFE.

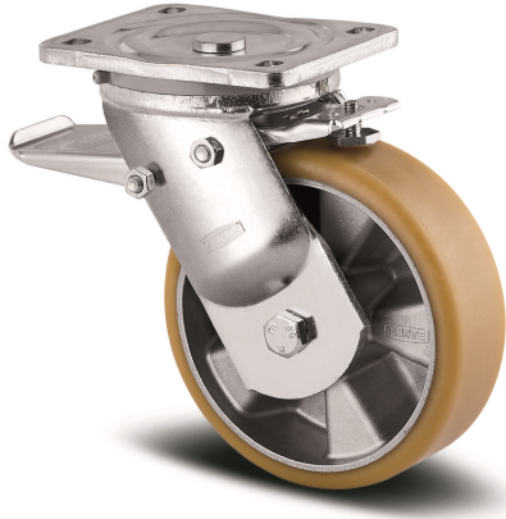


Image may differ from the original product

## PERFORMANCE

Roll performance	● ● ● ● ○
Movement noise	● ● ● ○ ○
Attrition	● ● ● ● ○
Corrosion resistance	● ● ● ● ○

## CORE ATTRIBUTES

Product name	Kappa
Type	Swivel castor with total lock, head end of castor
Standard	EN12532 - Transport Equipment
Load capacity at 2.5 mph	2204.62 lb
Load capacity at 3.7 mph	1763.7 lb
Load capacity Static	4409.24 lb
Temperature range (Minimum)	14 °F
Temperature range (Maximum)	140 °F
Overall height	12.01 in
Overall width	4.57 in
Overall weight	13.06 lb

## WHEEL

Body material	Aluminum
Tread material	Polyurethane, casted
Bearing	Precision ball bearing
Axle	Screwed with nut
Wheel color	Honey yellow (RAL1005)
Threadguards	Without threadguard
Diameter	9.84 in
Tread width	2.17 in
Body width	2.17 in
Hardness of tread (A)	92 Shore A
Hardness of tread (D)	42 Shore D

## HOUSING

Material	Cast iron, or iron forged, heavy
Fork shape	Broad, reinforced
Swivel bearing	Two ball races, reinforced or stainless
Color	Blue passivated
Offset	2.4 in
Swivel radius	7.38 in
Swivel interference	14.76 in
	✓
Dome diameter	4.37 in

## FITTING

Fitting type	Rectangular plate
Plate length	5.31 in
Plate width	4.33 in
Plate hole length (Minimum)	2.95 in
Plate hole length (Maximum)	3.15 in
Plate hole width (Minimum)	2.95 in
Plate hole width (Maximum)	4.13 in
Plate hole diameter	0.43 in

# KAPPA

9682ITP250P63 CL67

EAN 4031582315974  
Order number 00827807



BETTER MOBILITY. BETTER LIFE.

## TECHNICAL DRAWINGS

