

INTEGRAL SMART

1040UAP100R05-28 RAL9002

EAN 4031582455335
Order number 00064518w



Image may differ from the original product

PERFORMANCE

Roll performance	● ● ● ● ○
Movement noise	● ● ● ○ ○
Attrition	● ● ● ● ○
Corrosion resistance	● ● ● ○ ○

CORE ATTRIBUTES

Product name	Integral smart
Type	Swivel castor with central, total lock
Standard	EN12531 - Hospital Bed Castors
Load capacity at 3 km/h	100 kg
Load capacity at 4 km/h	100 kg
Load capacity Static	200 kg
Temperature range (Minimum)	-25 °C
Temperature range (Maximum)	-25 °C
Overall height	130 mm
Overall width	62 mm
Overall weight	0.907 kg
Certification	Tested and monitored by TÜV Süd

WHEEL

Body material	Polyamide
Tread material	Polyurethane, injected
Bearing	Precision ball bearing
Threadguards	Integrated threadguard
Diameter	100 mm
Tread width	32 mm
Hardness of tread (D)	42 Shore D

HOUSING

Material fork	Steel sheet, light
Fork shape	Closed
Swivel bearing	Precision ball bearing
Colour	Grey white (RAL9002)
Offset	40 mm
Swivel radius	90 mm
Swivel interference	180 mm
Dome diameter	62 mm

FITTING

Fitting type	Solid stem, round
Bolt diameter	28 mm
Bolt length	45 mm



IF
Design
Award



Red Dot
Design
Award

INTEGRAL SMART

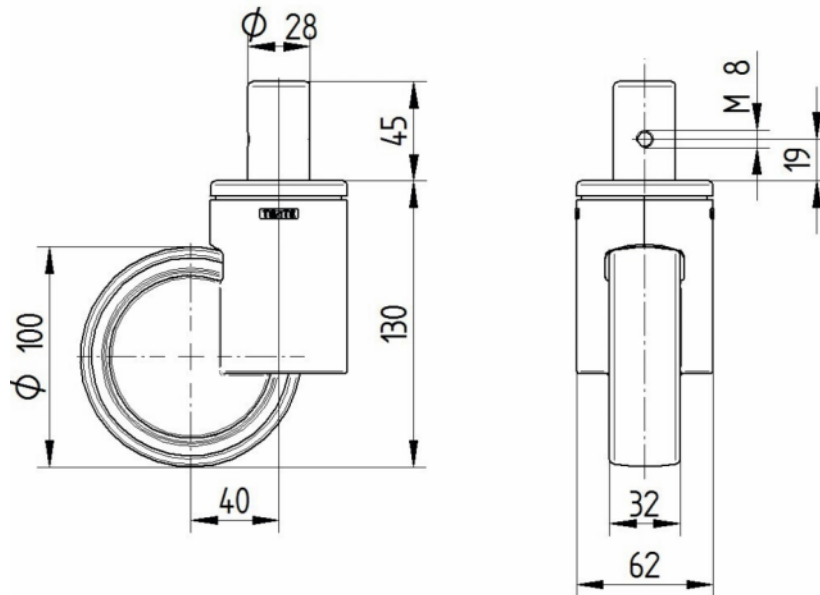
1040UAP100R05-28 RAL9002

EAN 4031582455335
Order number 00064518w



BETTER MOBILITY. BETTER LIFE.

TECHNICAL DRAWINGS



IF
Design
Award



Red Dot
Design
Award