

# ULTRATECH

FCP200X50-Ø20-75SHA-SOFT

EAN 4031582479010



BETTER MOBILITY. BETTER LIFE.

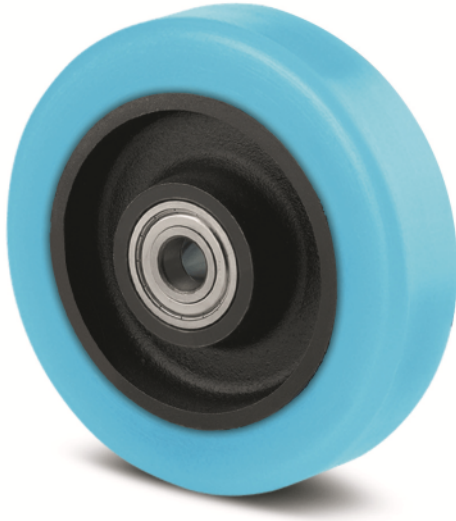


Image may differ from the original product

## WHEEL

Body material	Cast iron
Tread hardness	soft
Tread material	Ultratech Polyurethane, casted
Bearing	Precision ball bearing
Threadguards	With threadguard
Diameter	200 mm
Tread width	50 mm
Axle hole diameter	20 mm
Hub length	60 mm
Hardness of tread (A)	75 Shore A

## PERFORMANCE

Roll performance	● ● ● ● ○
Movement noise	● ● ● ○ ○
Attrition	● ● ● ● ○
Corrosion resistance	● ● ● ○ ○

## CORE ATTRIBUTES

Product name	Ultratech
Type	Wheel
Standard	EN12532 - Transport Equipment
Load capacity at 4 km/h	1000 kg
Load capacity at 6 km/h	800 kg
Load capacity Static	2000 kg
Temperature range (Minimum)	-20 °C
Temperature range (Maximum)	60 °C
Overall weight	1.3 kg