

LINEA CLINIC LOAD

5980UAP150R05-32

EAN 4031582382501



BETTER MOBILITY. BETTER LIFE.



Image may differ from the original product

PERFORMANCE

Roll Performance	●●●●●
Movement noise	●●●○○
Attrition	●●●●●○
Corrosion resistance	●●●●●○

CORE ATTRIBUTES

Product name	Linea clinic load
Type	Swivel caster
Standard	EN12530 - Devices Castors
Load capacity at 1.8 mph	440.92 lb
Electric conductive	no
Stainless	no
Load capacity Static	881.85 lb
Temperature range (Minimum)	14 °F
Temperature range (Maximum)	104 °F
Overall height	6.1 in
Overall width	2.8 in
Overall weight	3.72 lb

HOUSING

Housing Material	Polyamide
Fork shape	Twin wheel housing
Swivel bearing	Two ball races, reinforced or stainless
Offset	1.87 in
Swivel radius	4.82 in
Swivel interference	10 in

WHEEL

Body material	Polyamide
Tread material	Polyurethane, injected
Bearing	Precision ball bearing
Threadguards	With threadguard
Diameter	5.91 in
Tread width	0.59 in

FITTING

Fitting type	Solid stem, round
Bolt diameter	1.26 in
Bolt length	1.77 in



Deutscher Designer Club



Interzum Award



product design award

IF Design Award

LINEA CLINIC LOAD

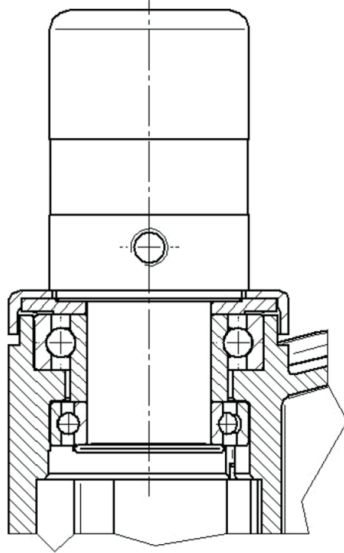
5980UAP150R05-32

EAN 4031582382501

Order number 00039570
Product Drawings



BETTER MOBILITY. BETTER LIFE.



Deutscher
Designer
Club



Interzum
Award



product
design
award

IF Design
Award