

GALEA

5070YGH125R05-22X40

EAN 4031582354362
Order number 00771033



BETTER MOBILITY. BETTER LIFE.

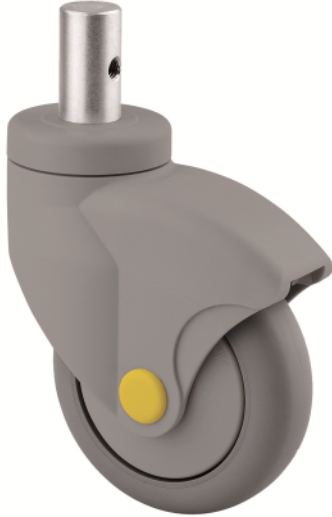


Image may differ from the original product

PERFORMANCE

| | |
|----------------------|-----------|
| Roll performance | ● ● ● ○ ○ |
| Movement noise | ● ● ● ○ ○ |
| Attrition | ● ● ● ○ ○ |
| Corrosion resistance | ● ● ● ● ○ |

CORE ATTRIBUTES

| | |
|-----------------------------|---------------------------|
| Product name | Galea |
| Type | Swivel castor |
| Standard | EN12530 - Devices Castors |
| Load capacity at 1.8 mph | 220.46 lb |
| Electric conductive | ✓ |
| Load capacity Static | 440.92 lb |
| Temperature range (Minimum) | -4 °F |
| Temperature range (Maximum) | 140 °F |
| Overall height | 6.38 in |
| Overall weight | 1.36 lb |

WHEEL

| | |
|-----------------------|---|
| Body material | Polypropylene, electric conductive |
| Tread material | Thermoplastic rubber, electric-conductive |
| Bearing | Plain bearing |
| Threadguards | With threadguard |
| Diameter | 4.92 in |
| Tread width | 1.18 in |
| Hardness of tread (A) | 87 Shore A |

HOUSING

| | |
|---------------------|----------------|
| Material | Polyamide |
| Fork shape | Closed |
| Swivel bearing | Two ball races |
| Offset | 1.57 in |
| Swivel radius | 4.04 in |
| Swivel interference | 8.07 in |

FITTING

| | |
|---------------|-------------------|
| Fitting type | Solid stem, round |
| Bolt diameter | 0.87 in |
| Bolt length | 1.57 in |

GALEA

5070YGH125R05-22X40

EAN 4031582354362
Order number 00771033



BETTER MOBILITY. BETTER LIFE.

TECHNICAL DRAWINGS

