

NOVATECH

ETX085X95-Ø25 HL100-F

EAN 4031582453034



BETTER MOBILITY. BETTER LIFE.

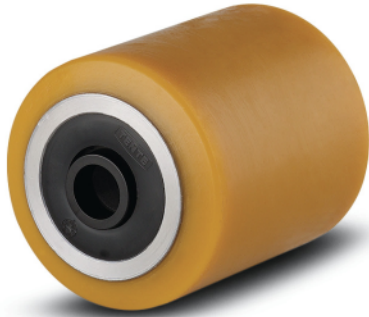


Image may differ from the original product

WHEEL

Body material	Steel, iron
Tread material	Polyurethane, casted
Bearing	Precision ball bearing, sealed
Threadguards	With threadguard
Diameter	3.35 in
Tread width	3.74 in
Axle hole diameter	0.98 in
Hub length	3.94 in
Hardness of tread (A)	92 Shore A
Bearing type	6006 2RS
Sealing type	A
Suitable for	linde_mic

PERFORMANCE

Roll performance	● ● ● ○ ○
Movement noise	● ● ● ○ ○
Attrition	● ● ● ● ○
Corrosion resistance	● ● ● ○ ○

CORE ATTRIBUTES

Product name	Novatech
Type	Wheel
Load capacity at 1.8 mph	2204.62 lb
Load capacity Static	4409.24 lb
Temperature range (Minimum)	-4 °F
Temperature range (Maximum)	140 °F
Overall weight	3.12 lb

NOVATECH

ETX085X95-Ø25 HL100-F

EAN 4031582453034



BETTER MOBILITY. BETTER LIFE.

TECHNICAL DRAWINGS

